



VOLLEY

Height Adjustable Tables.
Ergonomic. Versatile. Accommodating.





Take Work TO NEW HEIGHTS.

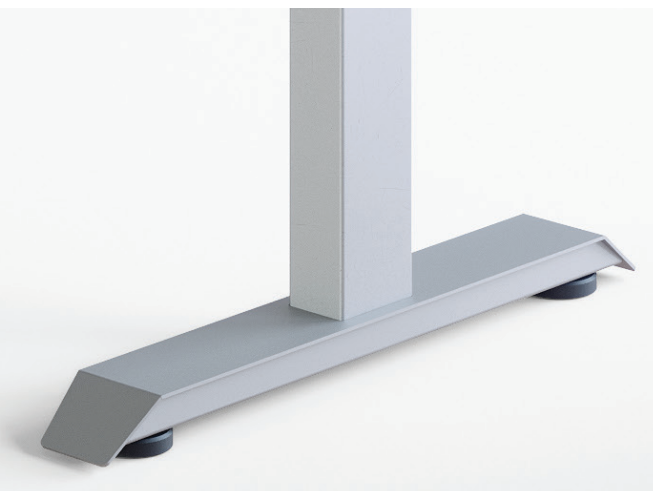


Volley height adjustable tables provide the flexibility and function necessary for healthy living in today's modern working environments. High-quality motors with memory pre-sets allow for a quiet and easy transition from sitting to standing at the press of a button. This ergonomic solution can stand alone for a touchdown station or integrate into Tayco's numerous benching, private office, and system solutions.

Tayco's Volley tables contains features that can accommodate any workspace, such as three stage telescopic legs, with an individual motor featured on each leg, four memory presets and the choice of 2 and 3 leg options.

Specs

Straight	5-Sided	Unitized	120°
 34"-72"W x 23"-30"D	 46"-60"A x 46"-60"B x 23"-30"C	 46"-60"A x 58"-84"B x 23"-30"C	 42"-54"A x 42"-54"B x 23"-30"C
Colours	2 Leg	3 Leg	Noise Level
<ul style="list-style-type: none"> Black White Silver 	<ul style="list-style-type: none"> 34" - 72" *Up to 84" available upon request 2 motors Load Capacity 275 lbs 	<ul style="list-style-type: none"> 36" - 84" 3 motors Load Capacity 330 lbs 	<ul style="list-style-type: none"> Less than 40 dB
Column			Speed
<ul style="list-style-type: none"> No hole clean design 1.9"x3.0" 	<ul style="list-style-type: none"> Base Height Range: 24" - 50" BIFMA Base Height Range: 21.75" - 47.75" Adjustable Base Width 34" - 42" 46" - 84" 	<ul style="list-style-type: none"> Base Height Range: 24" - 50" BIFMA Base Height Range: 21.75" - 47.75" Adjustable Base Width 36" - 42" 46" - 66" 58" - 84" 	<ul style="list-style-type: none"> 1.3"/s
			Foot
			<ul style="list-style-type: none"> 2.95"x23.65"





KIP

Approachable. Collaborative. Multipurpose.

tayco®

Talk of the OFFICE.



Kip is the talk of the office. This sleek yet sturdy design is made for conducting meetings, having meaningful conversations and nurturing connections between coworkers. Kip makes a design statement with its unique aluminum support structure & large availability of colours. Removable gable covers make for clean wire storage, and assembly is simple with a small kit of parts.

The ideal table for any open office environment, Kip is the spot to collaborate on work, share a meal or immerse in inspiration.

Specs

Height

○ 42" H

Widths

○ 60"-144" W

Depths

○ 30"-42" D

Surface

○ 1.5" thick surface & gables

84 x 36



R-PT2N-8436

Surface comes in 1 piece

144 x 42



R-PT2N-14442

Surface comes in 2 pieces

Electrics

- Flush mount module + 2AC power outlets & dual USB ports
Available in Black and White
- Side mounted, 1 USB A port, 1 USB C port
Available in Black

*Aluminum support bridge available in any of our powder paint colours. Removable interior gable covers for easy wire storage access.





KOKO

Minimalist. Versatile. Portable.

tayco®

Work from ANYWHERE.



Work from anywhere with Koko. Whether you're working on a couch, chair or anywhere else in the office, this minimalist laptop table easily adapts to your workspace. Its all aluminum construction is available in 20 colour options, and no assembly is required.

This unique streamlined design and leg architecture, comes in rectangular and round surfaces, and is the perfect table to move freely around the office.

Specs

Height

- 24" H

Shapes

- Rectangular
- Round

Round



RPT0-261616

Rectangular



RPTR-242014

Length & Width

- Round: 16" W
- Rectangular: 14"L x 20"W





NORRIS

Sophisticated. Professional. Impactful.

tayco®

Meet with IMPACT.



Master meetings with Norris. This stunning boardroom table is both sophisticated and commanding. Its polished design has removable gable covers and metal plinth inserts which have no exposed screws, seamlessly concealing wires & power, while being easily accessible. Norris is built to host world-class meetings.

Designed to maximize legroom and comfort with its horizontal plinth, this table is available in a variety of sizes and is easily assembled with a small kit of parts.

Specs

72 x 36



R-BS1E-7236

Surface comes in 1 piece

132 x 48



R-BS1E-13248

Surface comes in 2 pieces

240 x 60



R-BS1E-24060

Surface comes in 3 pieces

Depths

○ 36"-60" D

Lengths

○ 72"-240" L

Electrics

○ Pop Up Power + 2AC power outlets & dual USB ports
Available with each model. USB ports available in silver.

○ 1 slot open for HDMI, RJ11, RJ45

*1.5" Thick surfaces with metal accents available in any of our standard powder paint colours.

