

# SWITCH QUICK SHIP



Lead Time  
10 business days



Swift. Practical. Functional.

tayco®



# Upgrade Your Office, **PRONTO!**

*Transform your workspace promptly with Tayco's Switch Quick Ship program. Crafted by award-winning designers Fig40, Tayco's best-selling panel systems are now accessible at remarkable speeds. Coupled with our carefully curated selection of high-quality office furniture essentials, this program guarantees functionality and style, ideal for the modern workspace.*





## Features

### Worksurface Depth Options

- Full depth
- Full depth with grommet
- Cropped depth for 1" wire play

### Panel Specifications

- 2" thickness with 1" slotted system panel
- Standard and laminate gallery panels
- Powered and non-powered
- Standard panel heights: 42", 50", 66"
- Standard panel widths: 24"- 60"
- Gallery panel heights: 42", 50"
- Gallery panel widths: 26"- 146"

### Seating

- J1 ergonomic task Chair
- Black frame, mesh, and base

### Customization Options

- 9 laminates
- 8 fabrics
- 4 metal trim colours
- Optional glass frameless blade for panels

### Base Options

- Wrap leg
- Ladder leg
- Laminate gable leg
- Volley height adjustable base

### Volley Base

- Straight and 5-sided bases
- Black, white and silver
- 25" - 51" base height range

### Storage

- Underdesk lateral
- Pedestal - underdesk and mobile
- Flipper cabinet
- Steel shelf

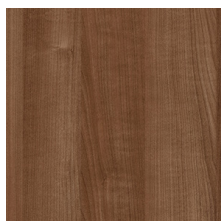
### Accessories

- Keyboard tray
- Monitor arms - single and double
- Clamp mount power module
- Pencil drawer
- Task light

Order processing time is 24 hours (not included in the lead time). Contact your Tayco Regional Sales manager for additional information. Quick Ship order coversheet must be sent with order to be applicable for the quick ship and pricing promotion. While supplies last. Standard Tayco freight program applies. Prices shown do not include applicable taxes. Additional charges may apply for special requests, residential and remote area deliveries. Please contact Customer service for fully assembled shipping quote. Order cannot be changed or cancelled after order acknowledgement. Standard terms and conditions of sale apply. Account must be in good standing for order to be processed without delay. Tayco reserves the right to modify or cancel the program/order/product at any time without notice. For additional information, please refer to the Tayco terms and conditions found online at [www.tayco.com](http://www.tayco.com).



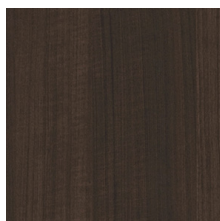
## Laminates



Copa Cabana L133/V133



Megantic L163/V163



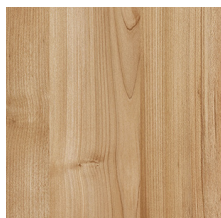
Tuxedo L132/V132



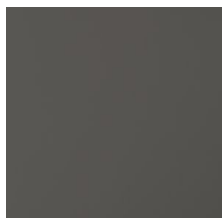
Fogo Harbour L165/V165



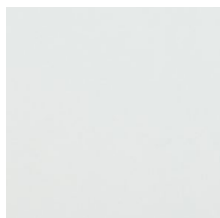
Sable Island L161/V161



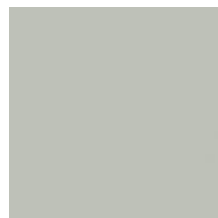
Tofino L162/V162



Moonlight L164/V164

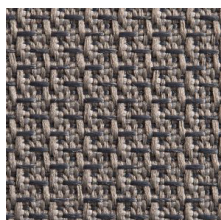


White L121/V121



Summer Drops L154/V154

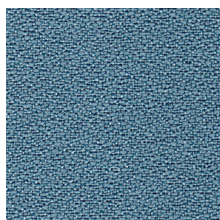
## Fabrics (Grade 1)



Seed - Reticolo F4121



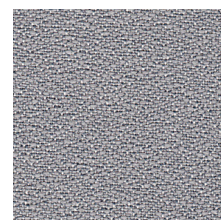
Stockinette - Zapote F4151



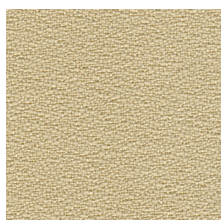
Fjord - Commerce F2181



Steel Grey - Commerce F2171



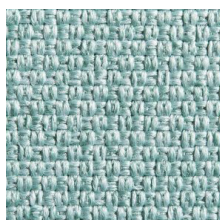
Grey - Commerce F2161



Slate - Commerce F2141

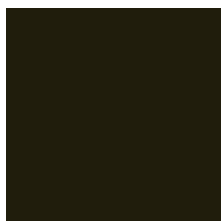


Nightfall - Ballo F6161

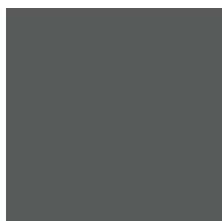


Seaside - Ballo F5191

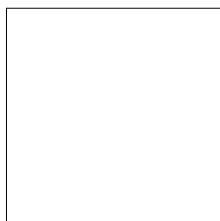
## Metal Trims



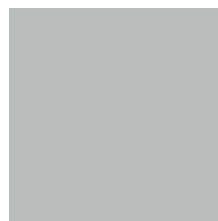
Black P114



Charcoal P139



White P121

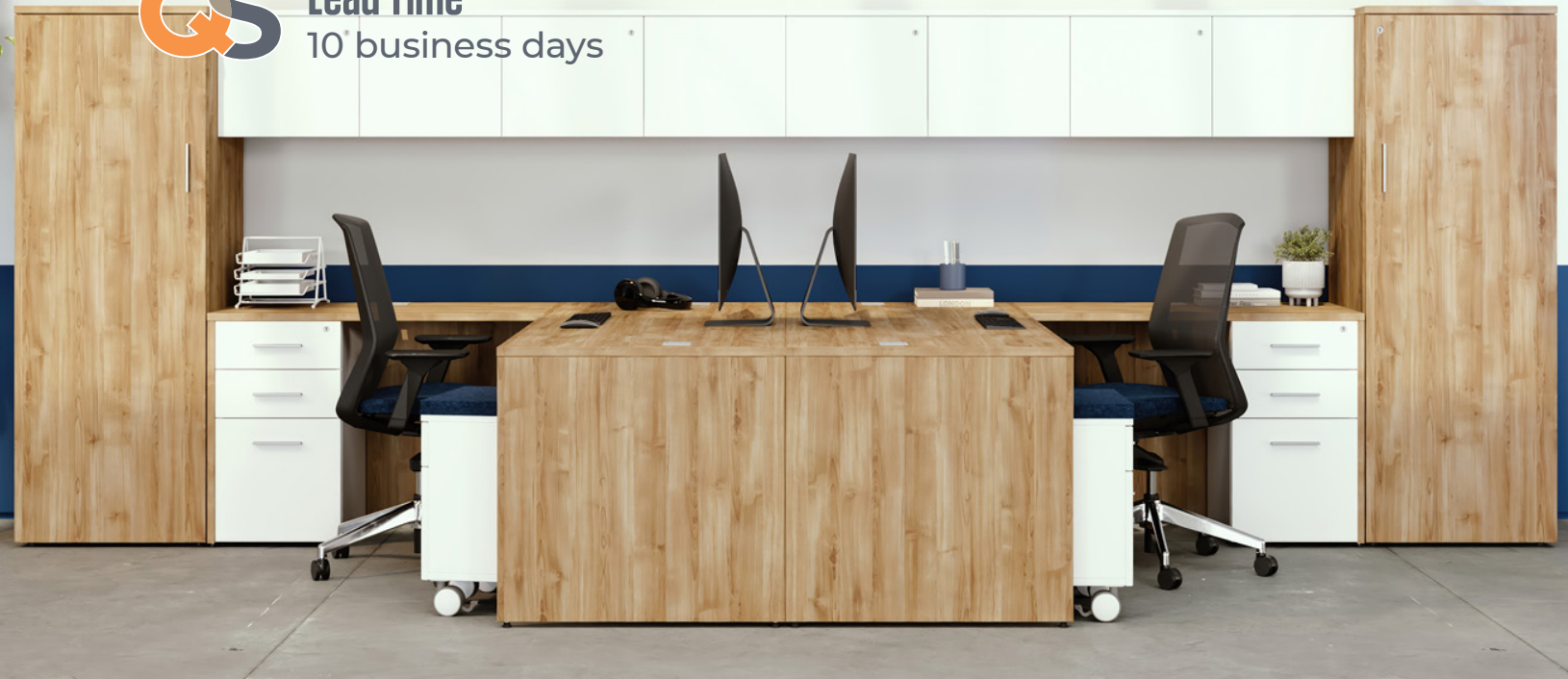


Silver P112

# UNION QUICK SHIP



Lead Time  
10\* business days



Prompt. Dynamic. Optimized.

tayco®

# Executive Furniture, at Speed

*Union Quick Ship provides exceptional speed and sophistication, delivering the best of the Union product line with quick turnaround, ensuring a workspace that seamlessly combines elegance and efficiency in record time.*

## Features

### Table Options

- Coffee, End Tables
- Seated Height
- Conference Tables

### Desk, Return & Unitized Options

- Straight, and Arc Desks
- Full, partial and recessed modesty
- Intermediate gable options on returns

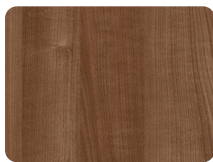
### Storage options

- Professional Storage
- Executive Storage
- Conference Storage

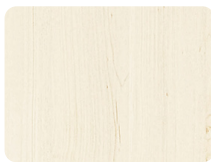
### Unique Details

- ¾" Cabinet Tops
- Easy Assembly
- Easily Customizable
- Minimal Hardware
- Kickplate Absence
- Slim Cabinet Tops

## Laminates



Copa Cabana  
L133/V133



Fogo Harbour\*  
L165/V165



Megantic  
L163/V163



Moonlight\*  
L164/V164



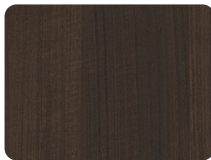
Sable Island  
L161/V161



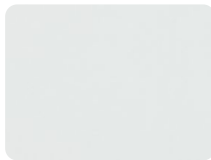
Summer Drops\*  
L154/V154



Tofino L162/  
V162

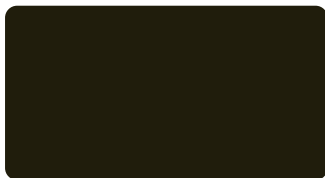


Tuxedo  
L132/V132



White  
L121/V121

## Metal Colours



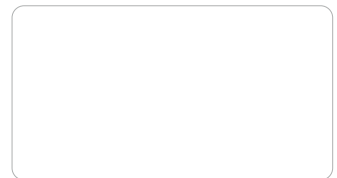
Black  
P114



Charcoal  
P139



Silver  
P112



White  
P121

\*not offered for 1.5" Conference Tabletops

Order processing time is 24 hours (not included in the lead time). Contact your Tayco Regional Sales manager for additional information. Quick Ship order coversheet must be sent with order to be applicable for the quick ship and pricing promotion. While supplies last. Standard Tayco freight program applies. Prices shown do not include applicable taxes. Additional charges may apply for special requests, residential and remote area deliveries. Please contact Customer service for fully assembled shipping quote. Order cannot be changed or cancelled after order acknowledgement. Standard terms and conditions of sale apply. Account must be in good standing for order to be processed without delay. Tayco reserves the right to modify or cancel the program/order/product at any time without notice. For additional information, please refer to the Tayco terms and conditions found online at [www.tayco.com](http://www.tayco.com).



# QSVOLLEY

## Height Adjustable Tables



Ergonomic. Versatile. Accommodating.

tayco®

# VOLLEY

Height Adjustable Tables

Take Work  
TO NEW HEIGHTS.





**GS** Lead Time  
10 business days



Volley height adjustable tables provide the flexibility and function necessary for healthy living in today's modern working environments.

High-quality motors with memory pre-sets allow for a quiet and easy transition from sitting to standing at the press of a button. This ergonomic solution can stand alone for a touchdown station or integrate into Tayco's numerous benching, private office, and system solutions

## Specs

Straight	5-Sided	Unitized	120°
			
40"-84"W x 23"-30"D	46"-60"A x 46"-60"B x 23"-30"C	46"-84"A x 46"-84"B x 23"-30"C	40"-54"A x 40"-54"B x 23"-30"C
2 Leg	3 Leg	Column	Noise Level
<ul style="list-style-type: none"> <li>40" - 84" <small>*Up to 84" available upon request</small></li> <li>2 motors</li> <li>Load Capacity 275 lbs</li> <li>Base Height Range: 25" - 51"</li> <li>Adjustable Base Width 39.75" - 42" 46" - 71"</li> </ul>	<ul style="list-style-type: none"> <li>40" - 84"</li> <li>3 motors</li> <li>Load Capacity 330 lbs</li> <li>Base Height Range: 25" - 51"</li> <li>Adjustable Base Width 39.75" - 42" 46" - 66" 58" - 71"</li> </ul>	<ul style="list-style-type: none"> <li>No hole clean design</li> <li>1.9"x3.15"</li> </ul>	<ul style="list-style-type: none"> <li>42 dB</li> </ul>
		Leg Colours	Speed
		<ul style="list-style-type: none"> <li>Black</li> <li>White</li> <li>Silver</li> </ul>	<ul style="list-style-type: none"> <li>1.3"/s</li> </ul>
			Foot
			<ul style="list-style-type: none"> <li>2.95"x23.65"</li> </ul>





## Elevated Workspace.



### Monitor Arms (Single & Dual)

*Flexible Ergonomics.* Supporting healthier posture and a modern, organized workspace.

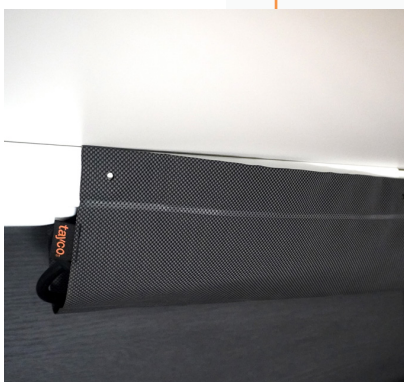
Mount Type:	Materials:	Adjustability:
Clamp-on & grommet mount	Silver Metal Construction	Full tilt (-90° to -15°) Swivel Height Adjust
<b>Single Arm Spec:</b> Screen Size: 17"–36" Load: 6.6–26.4 lbs (3–12 kg)		<b>Dual Arm Specs:</b> Screen Size: 17"–32" Load: 4.4–19.8 lbs (2–9 kg)



### Articulating Keyboard Tray

*Space Optimization.* Enhanced user comfort with smooth movement, ergonomic positioning, space-saving design.

Mount Type:	Colors:	Size:
Under-desk	Black	25"W x 10"D



### Flex Cable Organizer

*Easy Installation.* Keeps wires hidden and managed.

Specs:	
36" L x 6" W x 0.75" H	For Volley height adjustable tables Tayco-branded Sustainable packaging
2" cable slit	
4 Magnets on each side w/ holes for bolts	
Dark grey woven plastic	

# SMARTER ACCESSORIES.



## *Elevated Workspace.*



### Clamp-On Power Modules

*Discreet. Adaptable.* Power access where you need it with a ledge to hold your tech while charging.

#### Switch (V-EMW-2AC)

Clamp mount | Black finish  
2 Power, 1 USB-A, 1 USB-C  
3 ports | 120" cord



### LED Task Light

*Bright. Efficient.* Continuous, customizable task lighting.

#### Specs:

Dimmable switch  
Energy-efficient LED | 4,000K | 90 CRI  
Size (all): 1.20" H x 0.96" W  
Link up to 10 units  
72" power cord | White finish  
Includes metal mounting clips + connector



### Plastic Pencil Drawer

*Organized Storage, Right at Your Fingertips.*

#### Specs:

Material: Matte black injection-molded plastic  
Overall Dimensions: 2.8" H x 21" W x 16" D  
Mounting: Under-desk screw-mount brackets included  
Finish: Textured matte black