

panel fabric | grade two

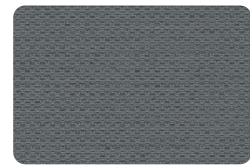
panel fabric | grade two

pattern	content	width	weight	breaking strength	colorfastness to light	flammability
chase	74% polyester 26% post-consumer recycled polyester	66" usable	13.5 ± 1.0 oz./lin. yd.	ASTM D5034 280 lbf. warp, 200 lbf. fill	AATCC 16.3 grade 4 min. at 40 hours	ASTM E-84 class 1 or A passes
binary	100% post-consumer recycled polyester	66" usable	11.0 ± 1.0 oz./lin. yd.	ASTM D3597-02 100 lbs. min. warp, 100 lbs. min. fill	AATCC 16-2004 min. 40 hours	ASTM E-84-10 class 1 or A state of CA. tech bulletin, 117 sec. E (CS-191-53) passes
metallation	56% post-consumer recycled polyester 44% polyester	66" usable	15.2 ± 0.5 oz./lin. yd.	ASTM D5034 150 lbf. min. warp, 150 lbf. min. fill	AATCC 16.3 grade 4 min. at 40 hours	ASTM E-84 class 1 or A passes
purpose	100% post-consumer recycled biodegradable polyester	67" usable	14.1 ± 1.0 oz./lin. yd.	ASTM D5034 205 lbf min. warp, 215 lbf min. fill	AATCC 16.3 grade 4 min. at 40 hours	ASTM E-84 class 1 or A passes
broadcast	100% polyester	66" usable	9.5 ± 0.5 oz./lin. yd.	ASTM D5034 150 lbf. min. warp, 100 lbf. min. fill	AATCC 16.3 grade 4 min. at 40 hours	ASTM E-84 class 1 or A passes
whisper	53% post-consumer recycled polyester 47% polyester	66" usable	10.9 ± 1.0 oz./lin. yd.	ASTM D5034 270 lbf. warp, 150 lbf. fill	AATCC 16.3 grade 4 min. at 40 hours	ASTM E-84 class 1 or A passes
cascade	100% post-consumer recycled polyester	66" usable	11.0 ± 1.0 oz./lin. yd.	ASTM D3597-02 100 lbs. min. warp, 100 lbs. min. fill	AATCC 16-2004 min. 40 hours	ASTM E-84 class 1 or A state of CA. tech bulletin, 117 sec. E (CS-191-53) passes

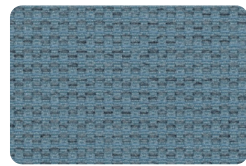
NOTE: Dye lots may vary slightly from samples shown.  
Colours not shown on the card, but available in the patterns featured, can be ordered from the supplier at no extra cost to the customer.

panel fabric | grade two

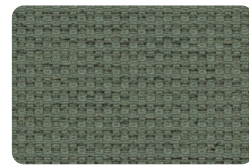
chase



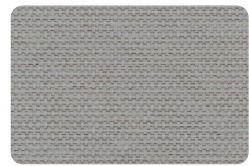
pumice F9872



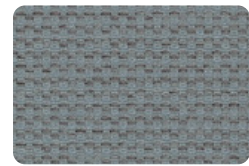
chambray F9882



moss F9892



shadow F9852



pewter F9862

binary



blueray F5202



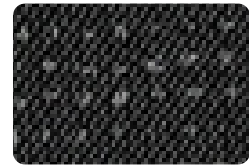
chipset F5212



modern F5222

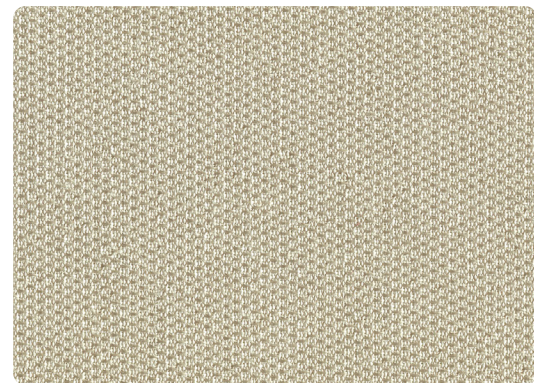


optical F5232



matter F5242

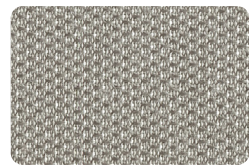
metallation



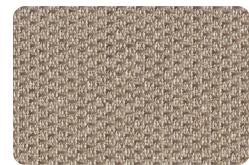
chrome F3202



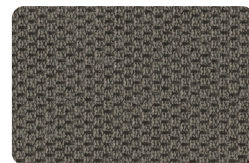
stainless F3212



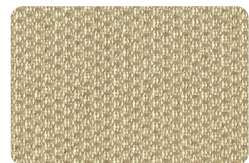
polished pewter F3222



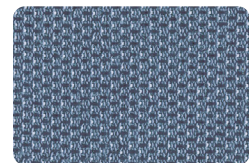
welded steel F3252



dark annealed F3242

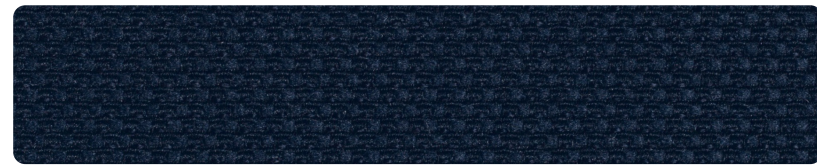


bronze F3262



fired titanium F3282

purpose



objective F8922



direction F8902



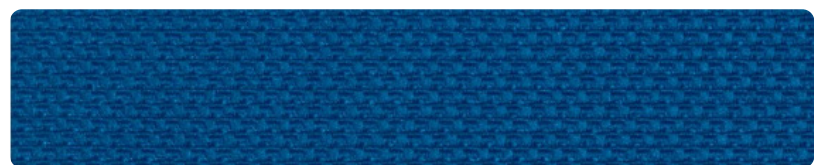
target F8872



intend F8812



ambition F8802

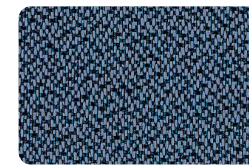


focus F8912

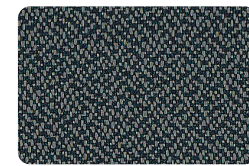


reason F8932

broadcast



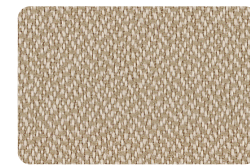
chicory F0202



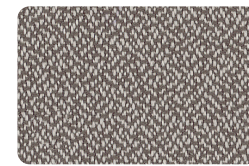
graphite F0212



mink F0222



serengeti F0232

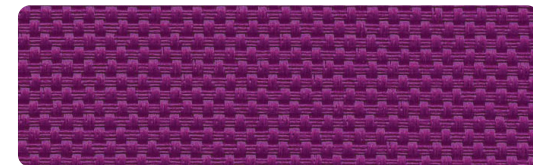


shade F0242

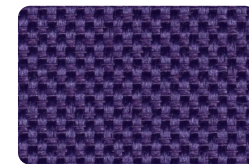
whisper



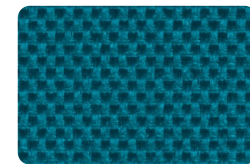
baffle F4662



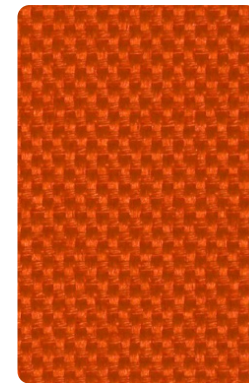
mum F4732



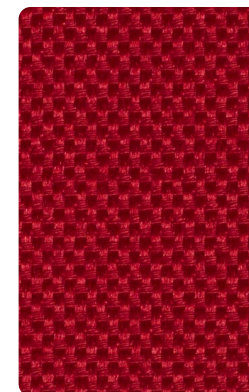
mystery F4692



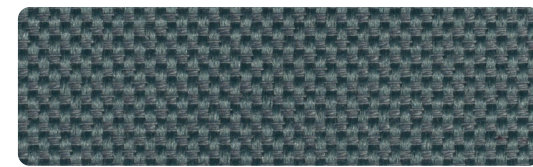
placid F4672



mellow F4712



chant F4722



lull F4622



peep F4702

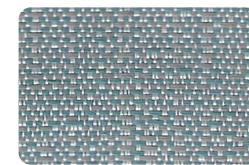


reserve F4652

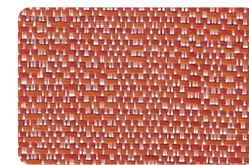


muffle F4582

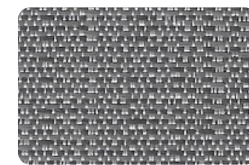
cascade



stack F4202



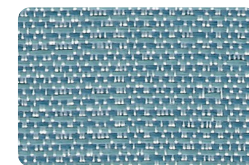
plutonic F4282



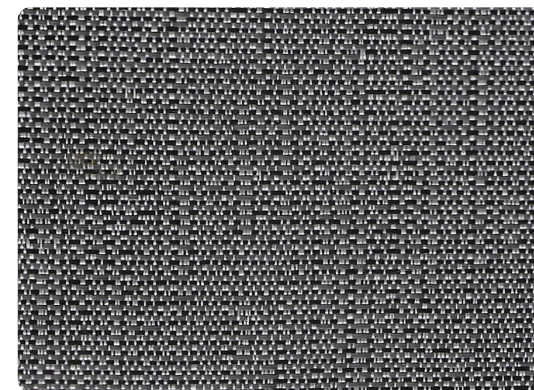
bauxite F4232



alluvium F4212



aquifer F4252



igneous F4262