

# SHIELD COLLECTION

The ultimate offering for retrofitting your office

tayco



# PANEL SHIELD



Safety is paramount, but it should not come at the cost of function or design. The Patent Pending Panel Shield, designed in collaboration with Fig40, is an innovative solution for workplaces looking to increase their panel heights.

Quick and easy to install with the option to both reconfigure in the future and remove if needed, this unique product works with Tayco’s Cosmo and Switch slotted panel systems without the need to damage the current panel.

The Panel Shield offers substantial protection. With an impeccable fit and finish and two discreet styles, the Panel Shield extends the height of the panels as high as 24” and is comprised of easy to clean materials to help reduce the risk of spreading infection in the workplace. The Panel Shield is available in clear tempered glass and laminate.

### SPECIFICATIONS:

Heights: 24”  
Widths: 18”-72”

### MATERIALS:

Clear Tempered Glass or Laminate

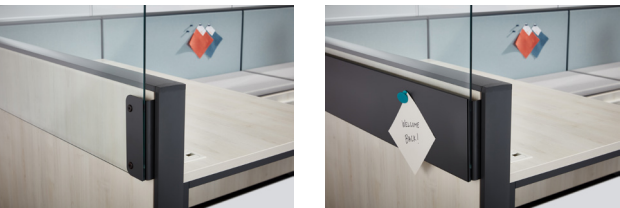


### METAL COLOURS:

20+ colours to select from



### OPTIONS:



Bare Panel Shield    Magnetic Fascia

### SPECIFICATIONS:

Ready in 4-weeks or less

# 2-WEEK QUICK SHIP FRAMELESS GLASS BLADE



Frosted tempered glass shown. Quick Ship available in clear tempered glass only.

Now available on a two-week lead time!

The Frameless Glass Blade, which works on any flat panel trim or worksurface is available on Quick Ship in select sizes! Unlike many other material options, the Glass Blade is constructed of tempered glass, which is easy to clean, extremely scratch-resistant, and does not lose colour over time.

The Glass Blade is the quickest way to create a safe environment for workers.

## SPECIFICATIONS:

Heights: 20"

Widths: 24", 30", 36", 48"

\*Additional sizes and finishes available on standard lead times

## MATERIALS:



Clear Tempered Glass

## METAL COLOURS:



Silver



White



# FRAMELESS BLADE



Take safety to new heights with the Frameless Blade!

In addition to our Quick Ship program, the Frameless Blade, is also available in a wide variety of sizes and finishes on our standard lead time.

This universal shield solution can be used on any flat surface, or flat panel trim, making it easy to retrofit current set-ups with safety and style.

## SPECIFICATIONS:

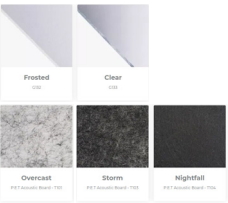
Heights: 16", 20"  
Widths: 18"-72"

## MATERIALS:

Clear Tempered Glass  
Frosted Tempered Glass  
P.E.T. Acoustic Board

## METAL COLOURS:

20+ colours to select from





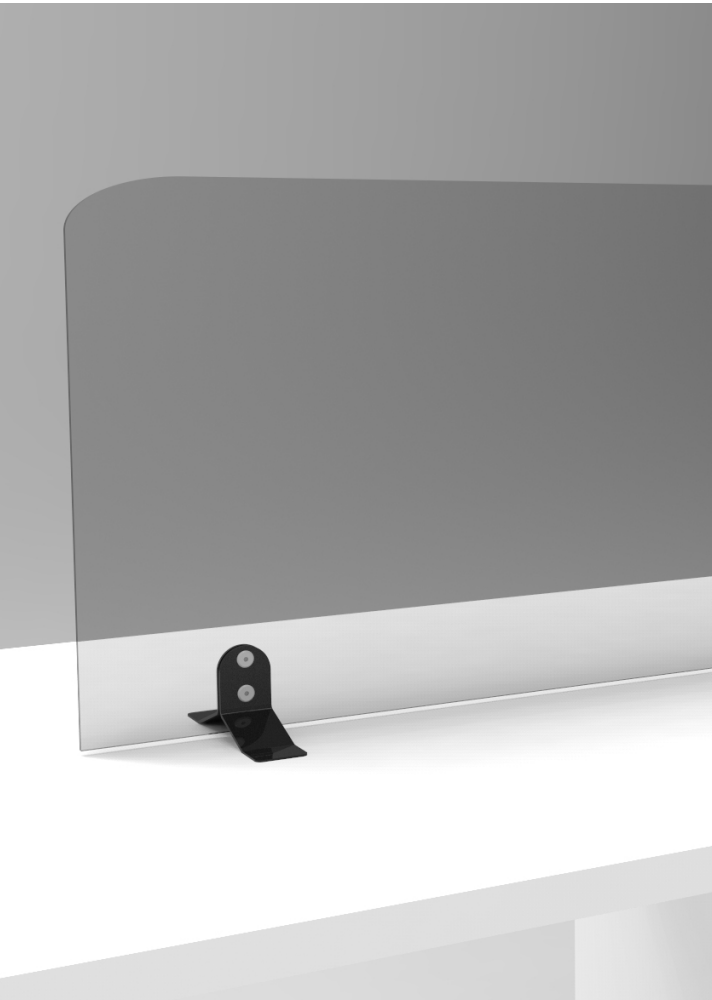
# SPLITS SHIELD

Part of the Tayco Shield Collection

tayco



# When Safety and Style COMBINE.



A sleek freestanding screen that does not compromise between aesthetics and safety. The Splits Shield provides protection for users at 24" high, and can be used on any worksurface, meeting or boardroom table.

Sturdy in construction, the screen provides ultimate division between neighbours, without the need to fasten it to the worksurface. The screen can be easily moved and placed in another location as necessary.

Offered in clear and frosted acrylic, as well as P.E.T. Acoustic Board, the Splits Screen easily brings safety and elegance to any space.

## Specs

### Heights

- 24"

### Widths

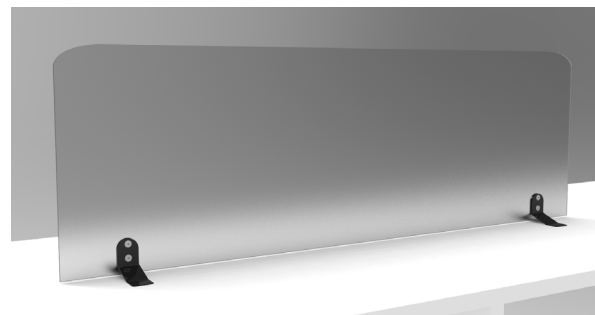
- 18"-60"

### Finishes

- Clear Acrylic
- Frosted Acrylic
- P.E.T. Acoustic

### Feet

- 20+ metal colours to select from





# UP SHIELD

Part of the Tayco Shield Collection

tayco



# Stay Safe, Stay PROTECTED.



Everyone deserves a safe and healthy workspace, and the Up Shield will help you provide the ultimate one.

Perfect for freestanding desks, the Up Shield uses Tayco's signature Up clamp to attach a clear or frosted acrylic divisional screen without damaging the worksurface.

The Up Shield, is offered at 29" high, with 24" above the worksurface, and 4" below the worksurface for ultimate protection.

Create a safe environment for each user with the Up Shield.

## Specs

### Heights

- 24"  
Above the worksurface

### Widths

- 24"-72"

### Finishes

- Clear Acrylic
- Frosted Acrylic

### Clamp

- 20+ metal colours to select from







# VISITOR SHIELD

Part of the Tayco Shield Collection

tayco



# VISITORS

## WELCOME.



Having face-to-face meetings with colleagues and clients is a vital part of the workplace. With the freestanding Visitors Shield you can continue to conduct those important meetings safely.

The Visitor Shield, available at 24" high, comes in clear acrylic to reduce the feeling of separation. The Visitor Shield also has the option to select a pass-through to easily share paperwork. The Visitor Shield affords the perfect, transparent solution for reception stations, and workstations with frequent visitors. Continue to work together, continue to see each other, and continue to stay safe.

### Specs

#### Heights

- 24"

#### Finishes

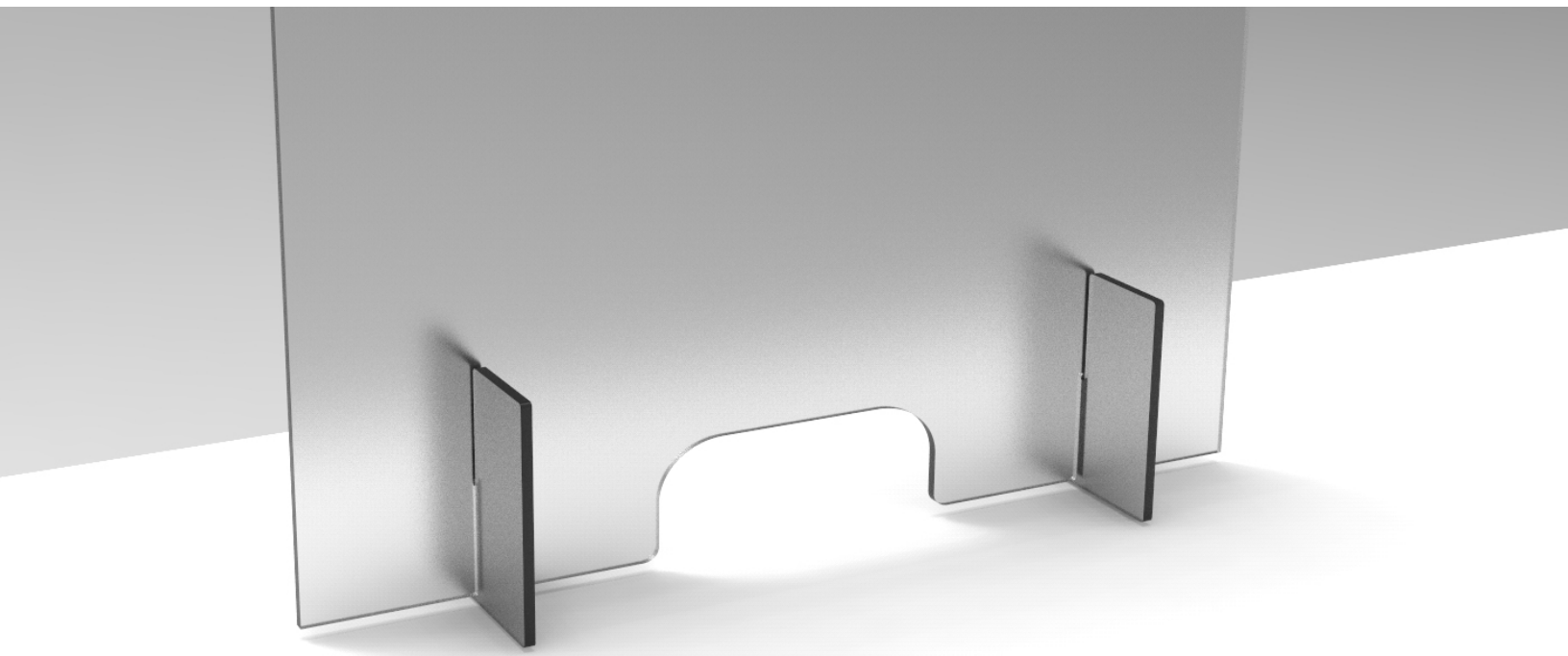
- Clear Acrylic

#### Options

- Pass-through

#### Widths

- 30"-48"





# SCENE SHIELD

Part of the Tayco Shield Collection

tayco



# KEEP YOUR PEOPLE PROTECTED.



A modern take on divisional solutions using Tayco's signature Scene posts.

The Scene Shield, offered in 24" high, is easy to install, and can be retrofitted to any current setup. The screens can be simply attached with a clamp, avoiding any damage to the surface, or can be permanently fastened with screws.

Available as a complete unit, in a single screen, extended screen, "U" configuration, or by part, allowing users to create a customized set-up for their current benching configuration. The Scene Shield comes in full length or with a 2" gap between the surface and screen to allow for the easy pass-through of items between neighbours.

Finally, for extra protection, the Scene Shield also offers screens that extend 12" past the worksurface.

Offered in a wide range of finishes, this is the ideal solution for quickly adding division to the open office.

## Specs

### Heights

- 24"

### Widths

- 24"-72"

### Finishes

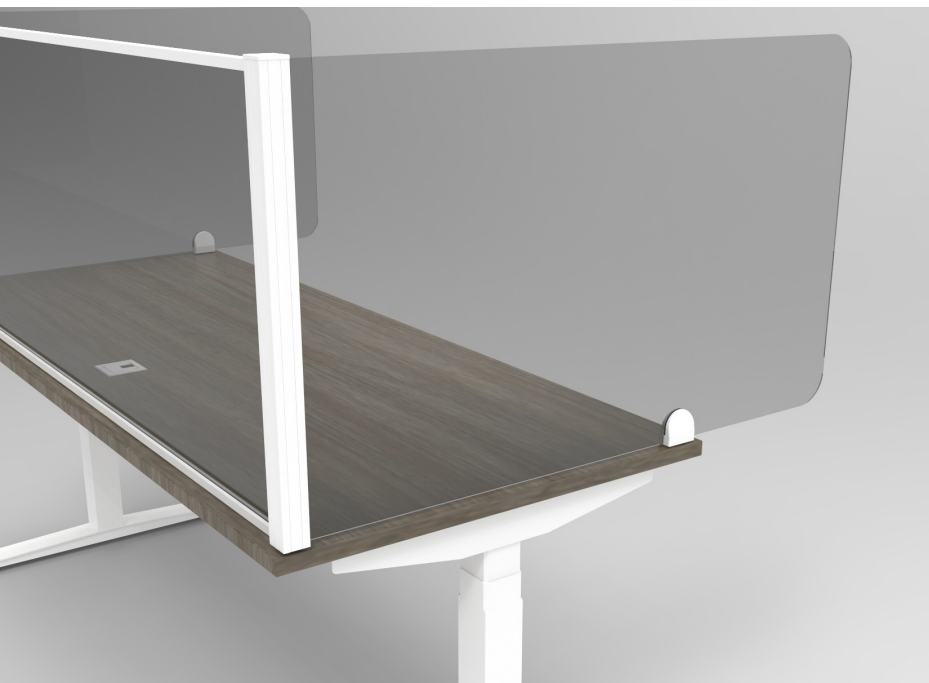
- Clear Acrylic
- Frosted Acrylic
- Laminate
- P.E.T Acoustic Board

### Posts

- Black
- White
- Silver

### Fasteners

- Clamp  
Standard for 1" surfaces  
Clamp for 1.5" surfaces available upon request
- Screw







# TRANSACTION SHIELD

Part of the Tayco Shield Collection

tayco



# CONTINUE TO MAKE TRANSACTIONS.



Stay shielded when greeting visitors and welcoming guests. The Transaction Shield, available in clear acrylic, offers a non-obtrusive, divider where users on either end can maintain a conversation, and pass documents back and forth.

This solution is fantastic for reception stations, or anyone who has frequent visitors at their desk.

This shield mounts directly to the worksurface, with the option for an additional transaction counter. The easy to clean, laminate counter, provides a sturdy place for guests to rest items, sign papers are more.

The Transaction Shield is a fantastic application for any workstation which handles a high volume of visitors, who may also require a surface.

## Specs

### Heights

- 24"

### Widths

- 40"-64"

### Finishes

- Clear Acrylic

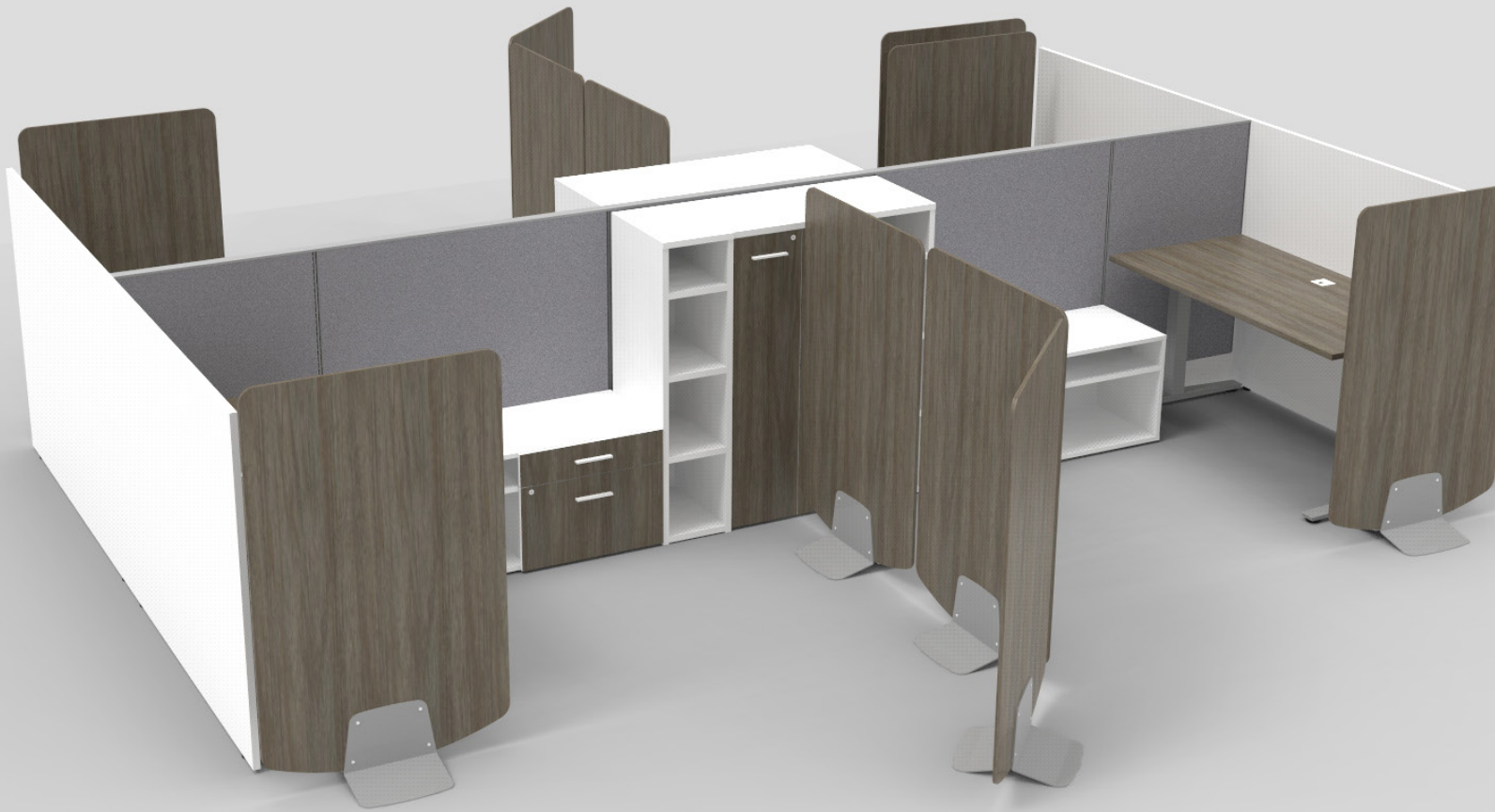
### Options

- Pass-through
- Transaction Counter

### Metal

- 20+ metal colours to select from





# FREESTANDING SHIELD

Part of the Tayco Shield Collection  
Designed with Fig40

tayco



# FOR THE ULTIMATE DIVISON.



An exercise in simplicity, the Freestanding Shield is a single element stabilized by a single foot. Geometry and material choice comprise the screen.

Designed with Toronto industrial design studio, Fig40, the Freestanding Shield is an independent structure expressed through a soft and approachable form with a generous arc on the lower side to lend a sense of lightness to a large, vertical surface. The screen is supported by a singular steel base. It is more than a divider, it is a design feature.

The Freestanding Shield, available in 20+ laminate colours, can be pulled up to any surface, panel or storage piece to create a beautifully architected divisional area, helping to keep you and your team safe.

## Specs

### Heights

- Laminate: 61"-78"
- White Board: 72"

### Widths

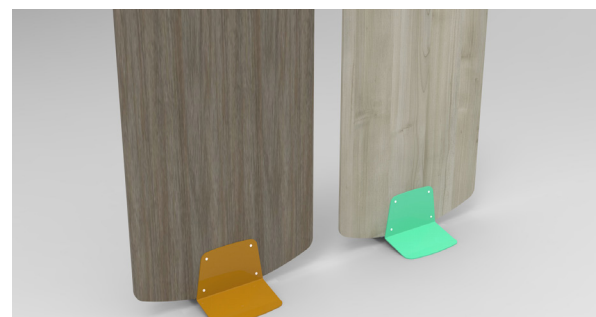
- 36"-48"

### Finishes

- Laminate
- White Board

### Metal

- 20+ metal colours to select from







# GALLERY SHIELD

Part of the Tayco Shield Collection

tayco



# SAFETY AND PRIVACY

## DONE STYLISHLY.



Create new spaces and safe areas with the Gallery Shield! With a wide variety of options, the Gallery Shield is guaranteed to compliment any space.

The Gallery Shield provides a stylistic approach to creating safe divisional areas in the workplace. Available in two uniquely designed base options, the D-Foot and Skate Foot, the Gallery Shield can be placed against a desk or wall to section off the space for safety and privacy.

A mobile version, compatible with the original Skate Foot, ensures that division spaces can be created and changed as required.

Also available with the Skate Foot is the Indent Gallery Shield. This stunning Shield uses an inward curvature, perfect for pulling up to a table or benching station.

Stylish and purposeful, the Gallery Shield provides you with a safe and easy return to the workplace.

### Specs

#### Heights

- Laminate: 61", 66", 69", 72"

#### Widths

- 36", 42", 48"

#### Finishes

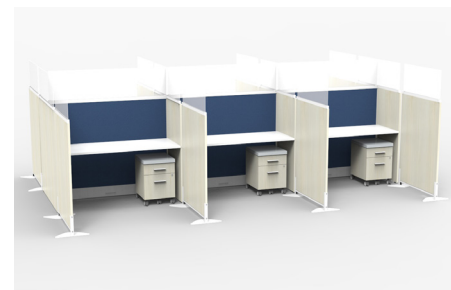
- Laminate
- Clear acrylic
- Frosted acrylic

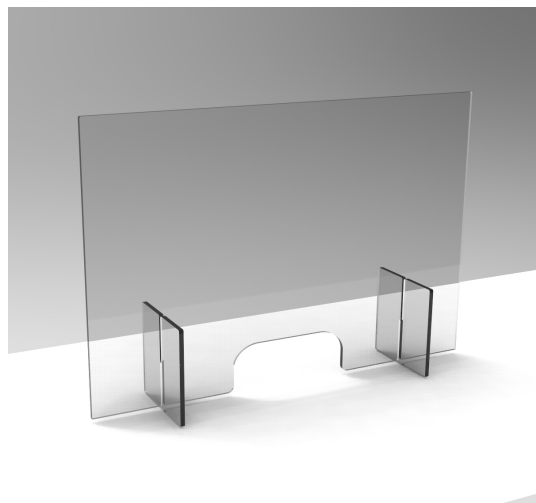
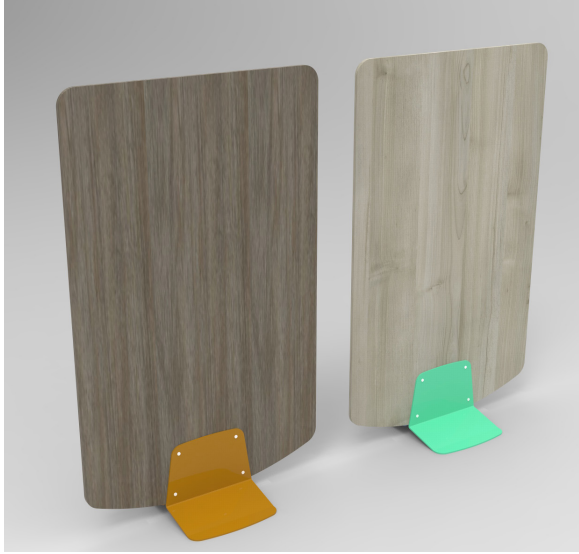
#### Metal

- 20+ metal colours to select from

#### Options

- Feet: D-Feet, Skate-Foot
- Additional Features: Mobile, Indent





tayco

