



# SHIELD COLLECTION

The ultimate offering for retrofitting your office

# PANEL SHIELD



tayco®





# Paramount SAFETY



Safety is paramount, but it should not come at the cost of function or design. The Patent Pending Panel Shield, designed in collaboration with Fig40, is an innovative solution for workplaces looking to increase their panel heights.

Quick and easy to install with the option to both reconfigure in the future and remove if needed, this unique product works with Tayco's Cosmo and Switch slotted panel systems without the need to damage the current panel.

The Panel Shield offers substantial protection. With an impeccable fit and finish and two discreet styles, the Panel Shield extends the height of the panels as high as 24" and is comprised of easy to clean materials to help reduce the risk of spreading infection in the workplace. The Panel Shield is available in clear tempered glass and laminate.

## Specs

### Height

- 24"

### Finishes

- Clear Tempered Glass
- Laminate

### Metal

- 20+ metal colours to choose from

### Width

- 18"-72"

### Options



- Bare Panel Shield



- Magnetic Fascia





# FRAMELESS BLADE



tayco®





# Take Safety to new HEIGHTS



Take safety to new heights with the Frameless Blade!

The Frameless Blade is available in a wide variety of sizes and finishes including clear tempered glass, frosted tempered glass, and P.E.T. acoustic board.

The P.E.T. acoustic board comes in three different colour options with acoustic absorption and is a perfect addition to any open or private office.

This universal shield solution can be used on any flat surface, or flat panel trim, making it easy to retrofit current set-ups with safety and style.

## Specs

### Height

- 16", 20"

### Width

- 18"-72"

### Finishes

- Clear Tempered Glass
- Frosted Tempered Glass
- P.E.T. Acoustic Board

ASTM C423-09a: ½" thick  
P.E.T. acoustic board  
achieves 0.45-0.90 NRC

### Metal

- 20+ metal colours to choose from



# SPLITS SHIELD



tayco®





# When Safety and Style COMBINE



A sleek freestanding screen that does not compromise between aesthetics and safety. The Splits Shield provides protection for users at 24" high, and can be used on any worksurface, meeting or boardroom table.

Sturdy in construction, the screen provides ultimate division between neighbours, without the need to fasten it to the worksurface. The screen can be easily moved and placed in another location as necessary.

Offered in clear and frosted acrylic, as well as P.E.T. Acoustic Board, the Splits Screen easily brings safety and elegance to any space.

## Specs

### Height

- 24"

### Width

- 18"-60"

### Finishes

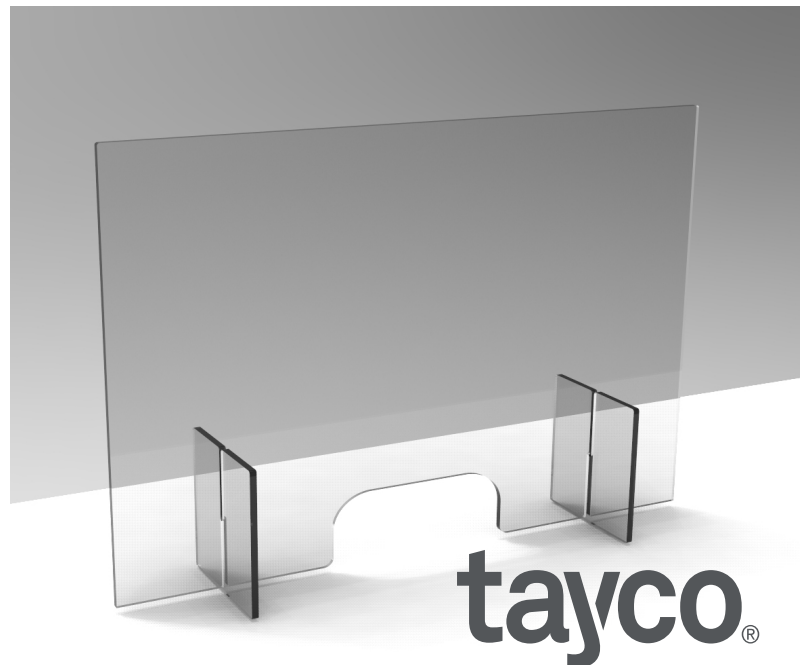
- Clear Acrylic
  - Frosted Acrylic
  - P.E.T. Acoustic Board
- ASTM C423-09a: ½" thick  
P.E.T. acoustic board  
achieves 0.45-0.90 NRC

### Feet

- 20+ metal colours to choose from



# VISITOR SHIELD



**tayco®**





# Visitors **WELCOME**



Having face-to-face meetings with colleagues and clients is a vital part of the workplace. With the freestanding Visitors Shield you can continue to conduct those important meetings safely.

The Visitor Shield, available at 24" high, comes in clear acrylic to reduce the feeling of separation. The Visitor Shield also has the option to select a pass-through to easily share paperwork.

The Visitor Shield affords the perfect, transparent solution for reception stations, and workstations with frequent visitors. Continue to work together, continue to see each other, and continue to stay safe.

## Specs

### Height

- 24"

### Finishes

- Clear Acrylic

### Options

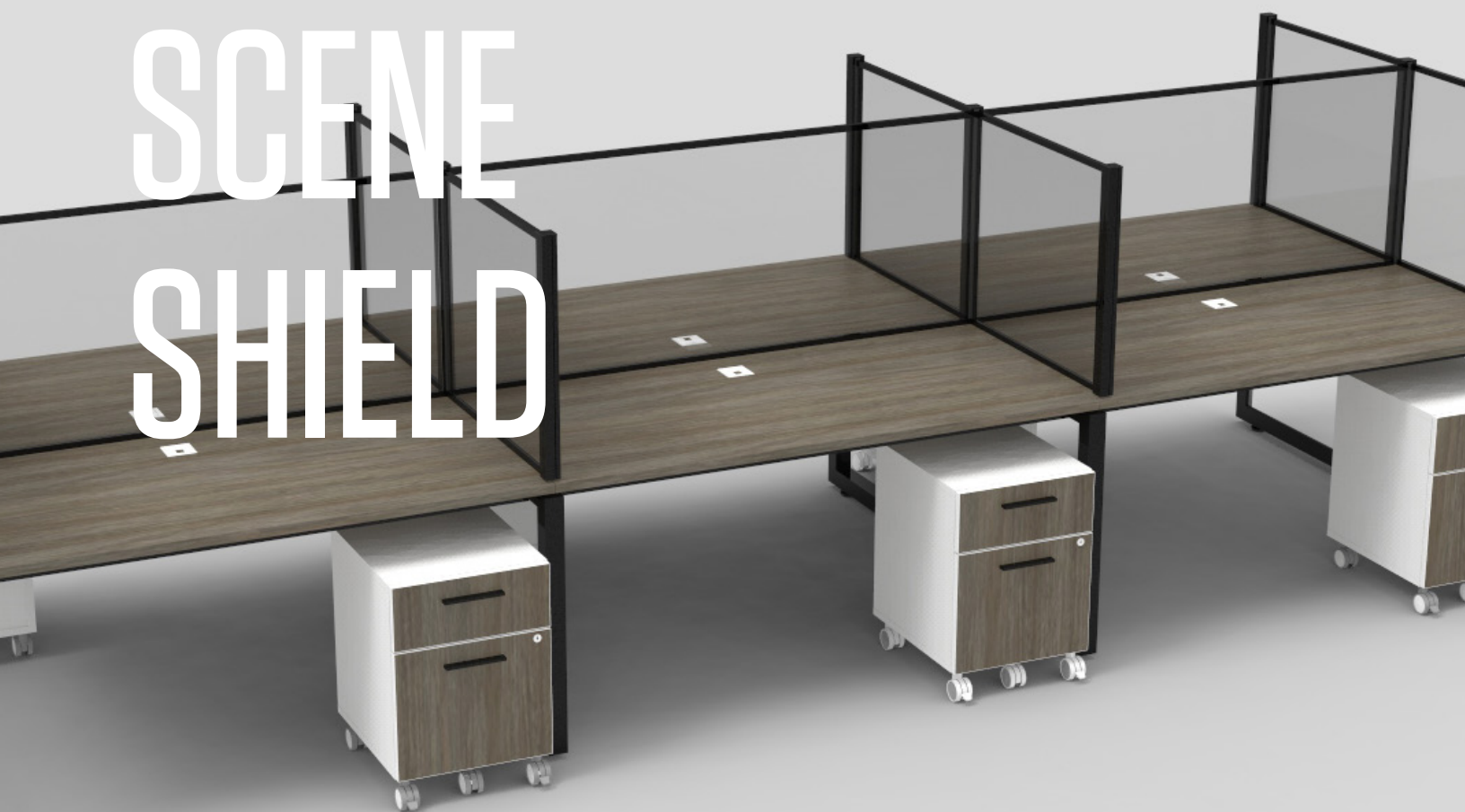
- Pass-through

### Width

- 30"-48"



# SCENE SHIELD



tayco®





# Keep your People **PROTECTED**



A modern take on divisional solutions using Tayco's signature Scene posts. The Scene Shield, offered in 24" high, is easy to install, and can be retrofitted to any current setup. The screens can be simply attached with a clamp, avoiding any damage to the surface, or can be permanently fastened with screws.

Available as a complete unit, in a single screen, extended screen, "U" configuration, or by part, allowing users to create a customized set-up for their current benching configuration.

The Scene Shield comes in full length or with a 2" gap between the surface and screen to allow for the easy pass-through of items between neighbours. Finally, for extra protection, the Scene Shield also offers screens that extend 12" past the worksurface.

Offered in a wide range of finishes, this is the ideal solution for quickly adding division to the open office.

## Specs

### Height

- 24"

### Width

- 24"-72"

### Finishes

- Clear Acrylic
  - Frosted Acrylic
  - Laminate
  - P.E.T. Acoustic Board
- ASTM C423-09a: 1/2" thick  
P.E.T. acoustic board  
achieves 0.45-0.90 NRC

### Posts

- Black
- White
- Silver

### Fasteners

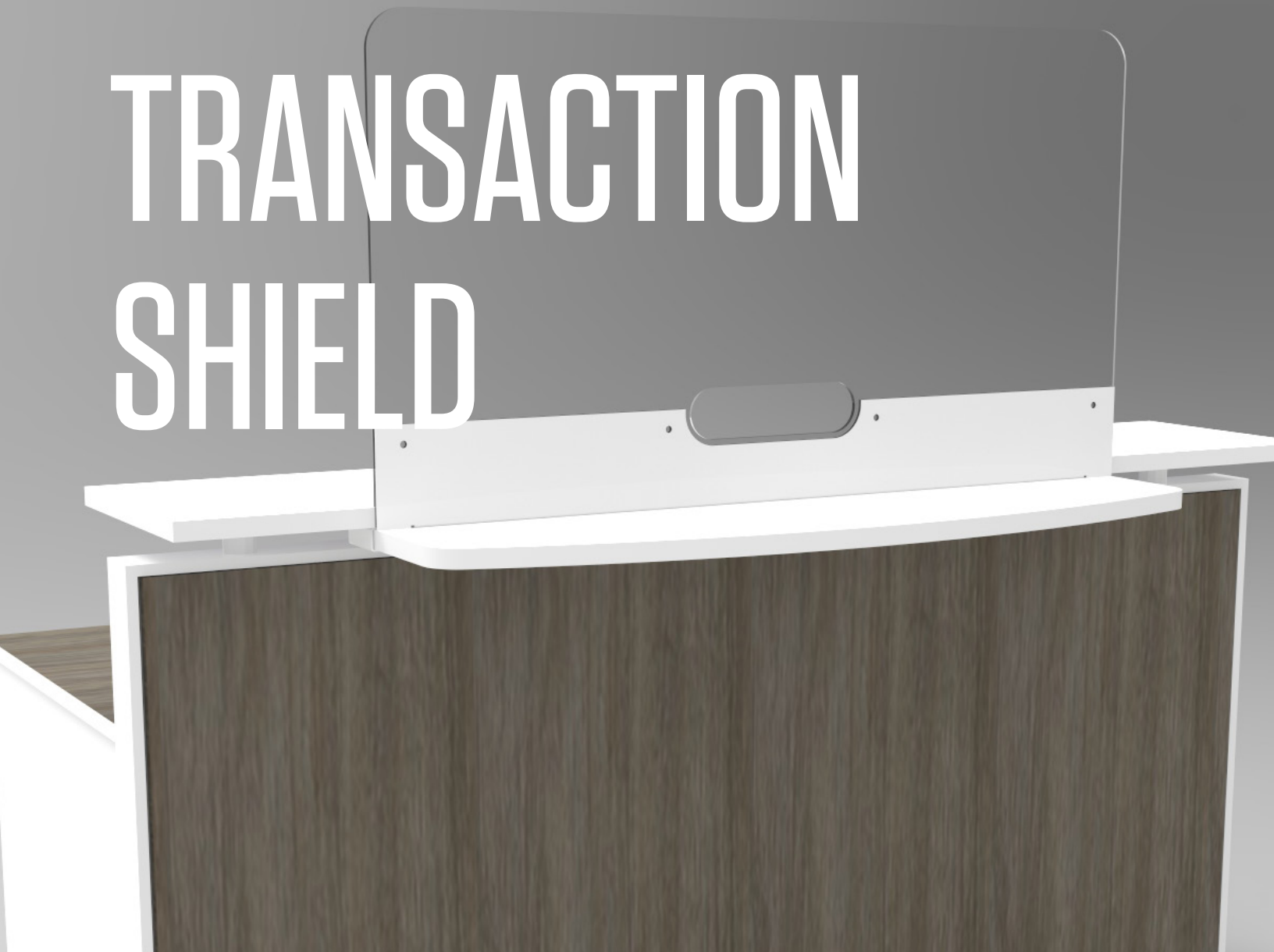
- Screw
  - Clamp
- Standard for 1" surfaces.  
Clamp for 1.5" surfaces  
available upon request.

### Options

- Full length
- 2" gap



# TRANSACTION SHIELD



tayco®





# Continue to Make **TRANSACTIONS**



Stay shielded when greeting visitors and welcoming guests. The Transaction Shield, available in clear acrylic, offers a non-obtrusive, divider where users on either end can maintain a conversation, and pass documents back and forth.

This solution is fantastic for reception stations, or anyone who has frequent visitors at their desk. This shield mounts directly to the worksurface, with the option for an additional transaction counter. The easy to clean, laminate counter, provides a sturdy place for guests to rest items, sign papers are more.

The Transaction Shield is a fantastic application for any workstation which handles a high volume of visitors, who may also require a surface.

## Specs

### Height

- 24"

### Finishes

- Clear Acrylic

### Metal

- 20+ metal colours to choose from

### Width

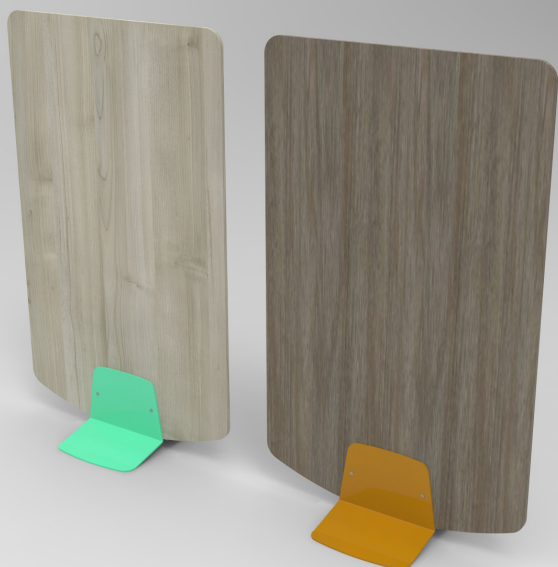
- 40"-64"

### Options

- Pass-through
- Transaction Counter



# FREESTANDING SHIELD



tayco®





# For the Ultimate DIVISION



An exercise in simplicity, the Freestanding Shield is a single element stabilized by a single foot. Geometry and material choice comprise the screen.

Designed with Toronto industrial design studio, Fig40, the Freestanding Shield is an independent structure expressed through a soft and approachable form with a generous arc on the lower side to lend a sense of lightness to a large, vertical surface. The screen is supported by a singular steel base. It is more than a divider, it is a design feature.

The Freestanding Shield, available in 20+ laminate colours, can be pulled up to any surface, panel or storage piece to create a beautifully architected divisional area, helping to keep you and your team safe.

## Specs

### Height

- Laminate: 61"-78"
- White Board: 72"

### Width

- 36"-48"

### Finishes

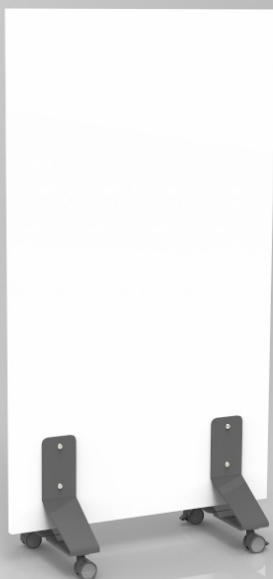
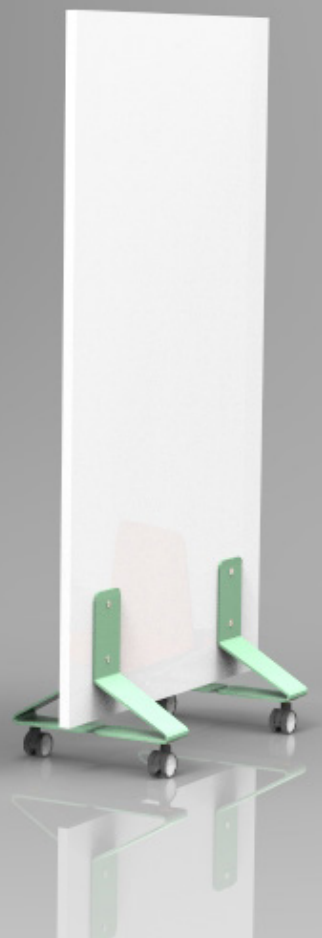
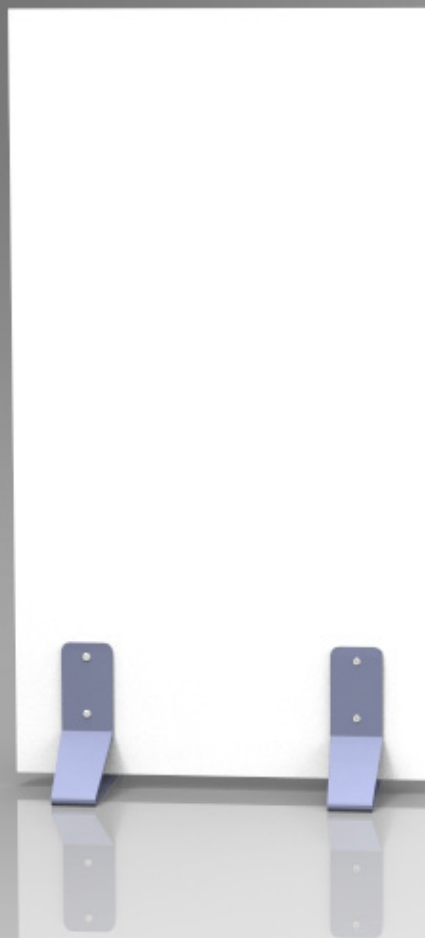
- Laminate
- White Board

### Metal

- 20+ metal colours to choose from



# GALLERY SHIELD



tayco®





# Safety & Privacy Done **STYLISHLY**



Create new spaces and safe areas with the Gallery Shield! With a wide variety of options, the Gallery Shield is guaranteed to compliment any space.

The Gallery Shield provides a stylistic approach to creating safe divisional areas in the workplace. Available in two uniquely designed base options, the D-Foot and Skate Foot, the Gallery Shield can be placed against a desk or wall to section off the space for safety and privacy. A mobile version, compatible with the original Skate Foot, ensures that division spaces can be created and changed as required.

Also available with the Skate Foot is the Indent Gallery Shield. This stunning Shield uses an inward curvature, perfect for pulling up to a table or benching station.

Stylish and purposeful, the Gallery Shield provides you with a safe and easy return to the workplace.

## Specs

### Height

- 61", 66", 69", 78"

### Width

- 36", 42", 48"

### Finishes

- Laminate
- Clear Acrylic
- Frosted Acrylic
- White Board

### Options

- Feet: D-Feet, Skate-Foot
- Additional Features: Mobile, Indent

### Metal

- 20+ metal colours to choose from



# CADDY SHIELD



tayco®





# Added Safety Made **EASY**

Bring added safety to your workspace with ease! Our latest addition to the Tayco Shield Collection, the Caddy Shield, can be applied to any flat surface to immediately create a barrier for privacy and safety without damaging the surface.

This universal shield solution is available in all any of our laminate, acrylic, or P.E.T. Acoustic Board finishes, while the base is available in any of our 20 metal colours!

A simple, non-damaging pressure mount holds the Caddy Shield in place, allowing for the shield to be easily moved without any damage to the worksurface.

The Caddy Shield features a solid metal divider caddy, perfect for holding any loose desk items like chargers!

## Specs

### Height

- 24"

### Width

- 24", 30", 36", 42"

### Finishes

- Laminate
- Clear Acrylic
- Frosted Acrylic
- P.E.T. Acoustic Board

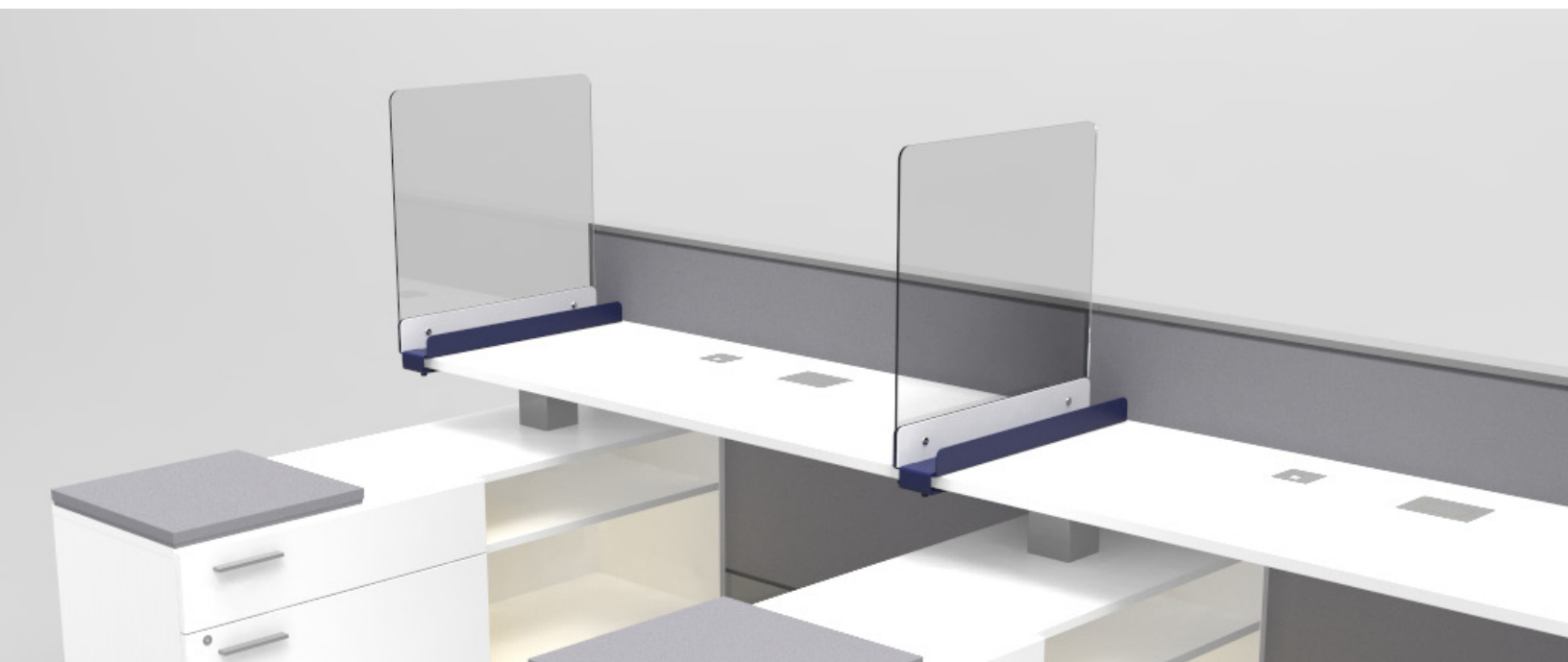
ASTM C423-09a: ½" thick  
P.E.T acoustic board  
achieves 0.45-0.90 NRC

### Options

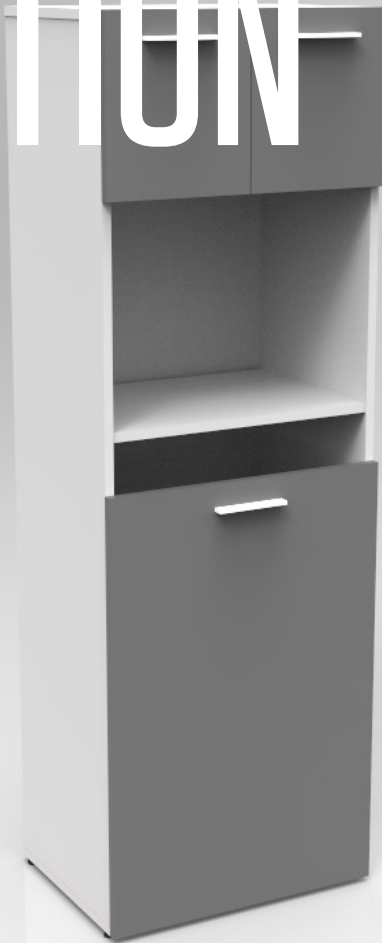
- 36" for 24" surface with 12" extension
- 42" for 30" surface with 12" overhang

### Metal

- 20+ metal colours to choose from



# SANITIZATION STATION



**tayco®**





# For a Cleaner, Safer ENTRANCE



Provide your employees with an added safety precaution and keep out unwanted germs with our new Sanitization Station! The fully-laminate cabinet features an open space perfect for a mountable sanitizer pump. The station also features a metal frame for easy storage of extra boxes of disposable masks.

The lower storage compartment is the ideal size for waste baskets for depositing sanitizing wipes or used disposable masks. Additional upper storage can be used for storing extra sanitizing materials or personal protective equipment so it is always within reach when needed.

The Sanitization Station is available in any of our 22 laminate colours, and can be specified with any of our handles.

## Specs

### Height

○ 72"

### Depth

○ 18"

### Handles

○ 8 handle styles to choose from

### Width

○ 24"

### Finishes

○ Laminate



400 Norris Glen Rd.  
Toronto, ON M9C 1H5  
T: (416) 252-8000  
T: (800) 675-4092

