



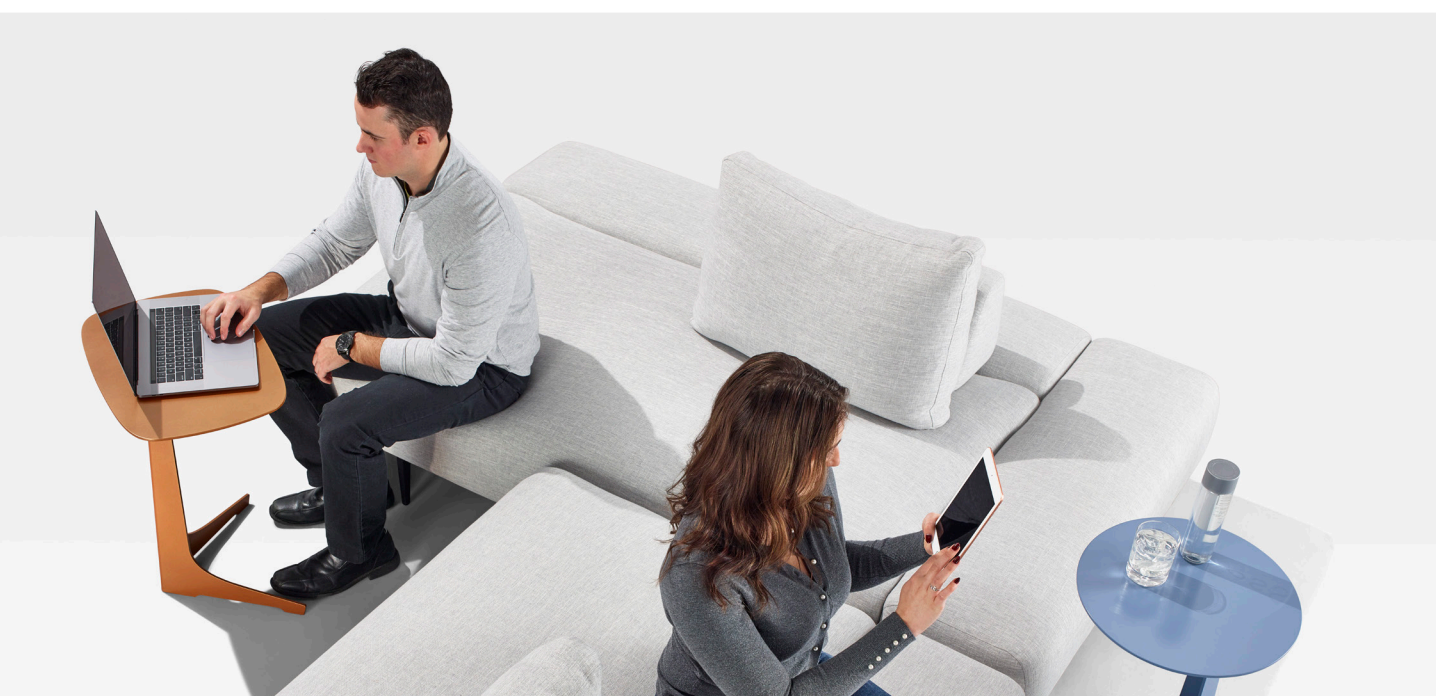
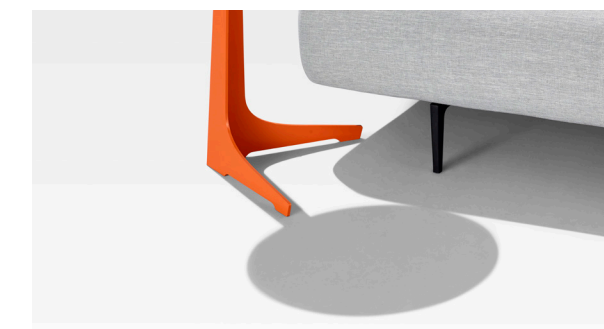
TABLES

KOKO

Work from ANYWHERE

With its unique “C” shape design and leg architecture, Koko comes in rectangular and circular surfaces, and is the perfect table to move freely around the office.

Work on the go with Koko. Whether you're working on a couch, chair or anywhere else in the office, this minimalist laptop table is easily customizable for your collaborative work space.



Specs

Height

- 24" H

Configurations

- Round



- Rectangular



Dimensions

- Round: 16" W

- Rectangular: 14" L x 20" W

Colours

- 20 powder paint colours options

Minimalist.
Versatile.
Mobile.

KIP



FIG[40]

The talk of the OFFICE

The community table for any open office environment, Kip is the spot to collaborate on work, share a meal and enjoy positive office vibes.



Community is core with Kip. This sleek yet sturdy design is made for conducting meetings, having meaningful conversations and nurturing connections between coworkers. Kip makes a design statement with its unique aluminum support structure and large availability of colours.



Specs

Height

- 42" H

Widths

- 60"-144" W

Depths

- 30"-42" D

Surface

- 1.5" thick surface & gables

Configurations



Surface comes in 1 piece



Surface comes in 2 pieces

Colours

- Metal components available in 20 powder paint colour options
- Laminate components available in 22 colour options

Electrics

- Flush mount module + 2 AC power outlets & dual USB ports
Available in Black & White
- Side mounted, individual access USBs
Available in Black
- Removable interior gable covers for easy wire management

**Approachable.
Collaborative.
Multipurpose.**

NORRIS



Meet with **IMPACT**

Designed to maximize legroom and comfort, this table is available in a wide array of shapes and sizes.



Master meetings with Norris. This stunning boardroom table is both sophisticated and impactful. With a polished design featuring modern details, metal accents and accessible power and cable management, Norris is built to host world-class meetings.



Specs

Configurations



Surface comes in 1 piece



Surface comes in 2 pieces



Surface comes in 3 pieces

Depths

○ 36"-60" D

Widths

○ 72"-240" W

Colours

- Metal components available in 20 powder paint colour options
- Laminate components available in 22 colour options

Electrics

- Optional pop up power grommet includes multiple technology options including power, USB, HDMI & data
Available in Silver
- Horizontal plinth affords wire management and additional leg room

**Sophisticated.
Professional.
Impactful.**

METRO



Designed for BUSINESS

Metro is everything you're looking for in a boardroom table, creating an inviting space for all manner of meetings.



Form meets function with Metro. From clean cable management and technical infrastructure to a dynamic design offered in multiple shapes and sizes, this boardroom table creates an inviting space for all manner of meetings.

Specs

Straight



- 72"-96" x 36"-48": 1-piece top, 2 legs
- 108"-192" x 48"-60": 2-piece top, 3 legs
- 204"-240" x 48"-60": 3-piece top, 4 legs
- 1" or 1.5" thick top

Bases



Elliptical



Gable Modesty

Boat



- 72"-96" x 36"-48": 1-piece top, 2 bases
- 108"-192" x 48"-60": 2-piece top, 3 bases
- 204"-240" x 48"-60": 3-piece top, 4 bases
- 1" or 1.5" thick top

Electrics



Ellora B

- In surface flip lid, 10-7/8"W x 4-7/8"D
- Silver colour
- Six Ports: 2 power, 1 dual USB, 3 open ports
- Add ons: HDMI Port, CAT 3 Jack, CAT 6 Jack
- One grommet per surface piece

Racetrack



- 72"-96" x 36"-48": 1-piece top, 2 legs
- 108"-192" x 48"-60": 2-piece top, 3 legs
- 204"-240" x 48"-60": 3-piece top, 4 legs
- 1" or 1.5" thick top

Tapered



- 84"-96" x 48" wide end & 36" narrow end: 1-piece top, 2 legs
- 108"-144" x 54"-60" wide end & 36"-48" narrow end: 2-piece top, 3 legs
- 132"-168" x 66"-72" wide end & 48"-54" narrow end: 3-piece top, 4 legs
- 192"-216" x 78" wide end & 60" narrow end: 4-piece top, 4 legs
- 240" x 60" wide end & 48" narrow end: 4-piece top, 4 legs
- 1" or 1.5" thick top

Dynamic.
Business.
Class.

HALIFAX



High FUNCTIONALITY

Designed with high functionality, Tayco's Halifax Collection provides flexible solutions for any multipurpose workplace.



Built for the every day, evolving office, this tables line is warm, inviting and balanced, with touches of industrial flair throughout.

Specs

	Rectangular <ul style="list-style-type: none"> Seated: 60"-144" x 30"-48" Standing: 60"-144" x 36"-48" Coffee: 36"-60" x 24"-36" Mobile: 36"-72" x 24"-36" 	Electrics <div>  MHO <ul style="list-style-type: none"> In surface pop-up, 8"W x 4"D, Silver 4 ports include 2 power, 1 dual USB, 1 open Add ons- HDMI Port, CAT 3 Jack, CAT 6 Jack </div> <div>  Dock 120 <ul style="list-style-type: none"> Under surface, 2 USB ports Black </div>	
	Super Ellipse <ul style="list-style-type: none"> Seated: 72"-144" x 36"-48" Standing: 72"-144" x 36"-48" Coffee: 36"-60" x 24"-36" 	Top Details <ul style="list-style-type: none"> Sizes 30"-96": 1-piece top Sizes 108"-144": 2-piece top V-Leg top: 96" max <div> <div>  A-Leg </div> <div>  V-Leg </div> </div>	
	Video <ul style="list-style-type: none"> Seated: 72"-144" x 42"-48" Standing: 72"-144" x 48" 	Base Details <ul style="list-style-type: none"> Circle and Trilobe: 3 legs Seated 108"-144": 4 legs with mid plinth Standing A-Leg 60"-96": 4 legs with a reinforcement bar Standing A-Leg 108"-144": 6 legs with 2 reinforcement bars Standing A-Leg tables come with a bottom brace 	
	Square	 Circle	
	Squircle	 Trilobe	
	<ul style="list-style-type: none"> Seated: 36"-48" x 36"-48" Coffee: 30"-48" x 30"-48" 	High Design	

Power Options

- No Grommets
- 1 Grommet (72"-96" only)
- 2 Grommets (108"-144" only)

Unique Features

- Metal features available in 20 colours
- Discreet wire management

High Design.
High Function.
High Adaptability.

VOLLEY



Adjust your **FOCUS**





Standing versus sitting? Do both with Height Adjustable. Transform your workstation seamlessly and make sitting and standing a natural part of your day.



Height Adjustable tables provide the flexibility and function necessary for healthy living in today's modern work environments.



Specs

Straight	5-Sided	Unitized	120°
 34"-72"W x 23"-30"D	 46"-60"A x 46"-60"B x 23"-30"C	 46"-60"A x 58"-84"B x 23"-30"C	 42"-54"A x 42"-54"B x 23"-30"C
Leg Colours <ul style="list-style-type: none">BlackWhiteSilver	2 Leg <ul style="list-style-type: none">34" - 72"2 motorsLoad Capacity 275 lbsBase Height Range: 24" - 50"BIFMA Base Height Range: 21.75" - 47.75"Adjustable Base Width 34" - 42" 46" - 84"	3 Leg <ul style="list-style-type: none">36" - 84"<small>*Up to 84" available upon request</small>3 motorsLoad Capacity 330 lbsBase Height Range: 24" - 50"BIFMA Base Height Range: 21.75" - 47.75"Adjustable Base Width 36" - 42" 46" - 66" 58" - 84"	Noise Level <ul style="list-style-type: none">Less than 40 dB Speed <ul style="list-style-type: none">1.3"/s Foot <ul style="list-style-type: none">2.95"x23.65"
Enclosures <ul style="list-style-type: none">No hole clean design1.9"x3.0"			

Ergonomic.
Adjustable.
Uplifting.



STUDI

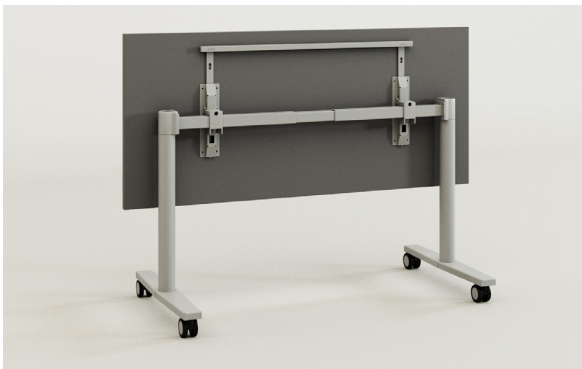
TABLE

Mobility in EVERY SPACE

Engineered for versatility and style, the Studi table adapts effortlessly to any environment, making it the ideal solution for training rooms, boardrooms, and dynamic workspaces.



The Studi table excels with its mobile, multi-functional design and can be easily arranged in a room or folded and stored away as needed to save space.



Specs

Widths

- 48"-72"

Modes

- Mobile

Arrangements

- Lockable nesting
- Optional linking mechanism

Depths

- 24", 30"

Colours

- Base available in silver only
- Surface available in 22 laminate options

Height

- 29.5"

Modesties

- Frosted acrylic
- Storm PET T103

Electrics

- Daisy chaining
- Surface power module

Mobile.
Versatile.
Configurable.

HANNA



Suited to the OCCASION

These new additions to our Occasional Tables line in both X and T bases have slim lines and angles, appearing sleeker than the standard base tube.



Occasional tables are necessary for every office, providing great touch down points and cafeteria tables.

Specs

Widths

- 18"-96" W

Bases

- Slim T-Base
- Slim X-Base
- Tubular T-Base
- Tubular X-Base

Shapes

- Super ellipse
- Squircle
- Round
- Rectangular
- Square

Depths

- 18"-48-" D

Colours

- Metal components available in 20 powder paint colour options
- Laminate components available in 22 colour options

Functional.
Sleek.
Effective.

FIG[40]

Fig40 is a Toronto based industrial design studio driven to developing relevant, sustainable and award-winning products that inspire collaboration – collaboration between people, and collaboration between design and manufacturing. The outcome is a design that is not only engaging and relevant but also a solution for bringing people together in organic and deliberate ways.



Terence Woodside

Terence Woodside is a founding partner of Fig40 studio. With a degree in Mechanical Engineering from Queen's University and experience in automotive and furniture manufacturing, he understands the nature of natural forces, what materials can do, and how they are shaped. In designing beautiful systems like Tayco's Switch, his goal is to bring better products into the world through process and experience.

Tayco Tables COLLECTION

"The Tayco Table Line (Koko, Kip, Norris) was a fascinating project to work on. Workplace design is in a state of flux with many interpretations of what a private office even is and how they are used."

"Our challenge was to design a product that can respond to the evolving and uncertain requirements of clients and designers while remaining relevant to more conventional applications, all the while with a product that can be made efficiently by Tayco at a competitive cost point. This line of tables is a system that reinterprets caseloads, it is flexible, with a clear identity and wide scope of applications."

Lee Fletcher

Lee Fletcher is an industrial designer and also a founding partner at Fig40. He received an MA in Industrial Design from Manchester Metropolitan University, and is inspired by the intersection of design, business and manufacturing. Whether it's creating new furniture systems or business equipment, his work has won numerous awards and accolades including a RedDot award in 2013 and the Best of Canada Design award.



400 Norris Glen Rd.
Toronto, ON M9C 1H5
T: (416) 252-8000
T: (800) 675-4092

