

## Tayco Panelink LTD. SA# E60PQ-140003/029/PQ

### Fabrics

#### Panel Fabrics

---

**Grade 1** **02**

Commerce/Crevasse 02

---

**Grade 2** **03**

Crosstown 03

Dune 03

Abstract 03

Momentum 04

#### Seating Fabrics

---

**Grade 1** **05**

Open House 05

Perseus 05

## fabric specifications

### commerce

width	66" usable
content	100% polyester
weight	12.0 ± 1.0 oz./lin. yd.

### performance

breaking strength ASTM D5034	250 lbs. min. warp, 300 lbs. min. fill
colorfastness to light AATCC 16E	class 5 at 40 hours min.

### flammability

ASTM E-84	class 1 or A
state of CA. tech bulletin, 117 sec. E (CS-191-53)	passes

### crevasse

width	66" usable
content	100% polyester
weight	12.0 ± 1.0 oz./lin. yd.

### performance

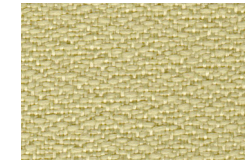
breaking strength ASTM D5034	250 lbs. min. warp, 300 lbs. min. fill
colorfastness to light AATCC 16E	class 5 at 40 hours min.

### flammability

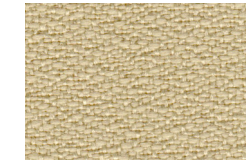
ASTM E-84	class 1 or A
state of CA. tech bulletin, 117 sec. E (CS-191-53)	passes

## panel fabric | grade one

### commerce



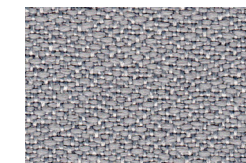
oyster F2191



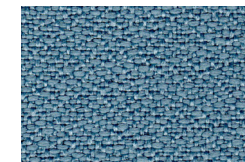
slate F2141



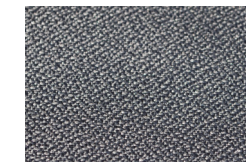
steam F2201



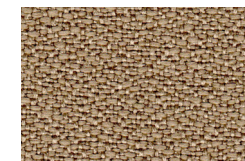
grey F2161



fjord F2181



steel grey F2171



sand F2151



cyan blue F2211



kiwi F2221

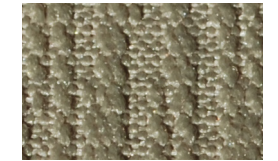


citrus F2231

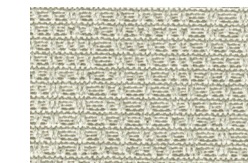
### crevasse



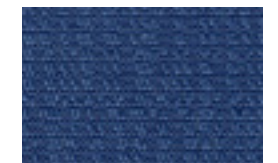
gorner F3171



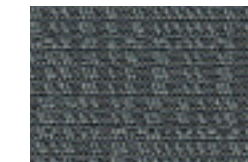
easton F3161



chamonix F3181



crown blue F3191



neutral grey F3201

NOTE: Dye lots may vary slightly from samples shown.

## fabric specifications

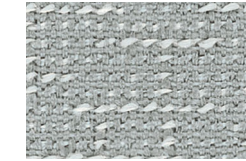
pattern	content	width	weight	breaking strength ASTM D5034	colorfastness to light AATCC 16E	flammability
<b>crosstown</b>	TERRATEX® 100% recycled polyester	66" usable	13.6 ± 1.0 oz./lin. yd.	250 lbs. min. warp, 150 lbs. min. fill	40 hours min.	ASTM E-84 class 1 or A state of CA. tech bulletin, 117 sec. E (CS-191-53) passes
<b>dune</b>	100% polyester	66" usable	11.0 ± 1.0 oz./lin. yd.	160 lbs. min. warp, 110 lbs. min. fill	class 5 at 40 hours min.	ASTM E-84 class 1 or A state of CA. tech bulletin, 117 sec. E (CS-191-53) passes
<b>abstract</b>	TERRATEX® 100% recycled polyester	66" usable	10.9 ± 1.0 oz./lin. yd.	250 lbs. min. warp, 100 lbs. min. fill	class 5, 40 hours min.	ASTM E-84 class 1 or A state of CA. tech bulletin, 117 sec. E (CS-191-53) passes
<b>tempest</b>	TERRATEX® 100% recycled polyester	66" usable	11.3 ± 1.0 oz./lin. yd.	180 lbs. min. warp, 160 lbs. min. fill	40 hours min.	ASTM E-84 class 1 or A

## panel fabric | grade two & three

### grade 2 crosstown



trompe d'oeil F1202



sterling F1212



stucco F1222

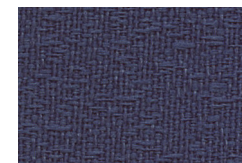


buff F1252

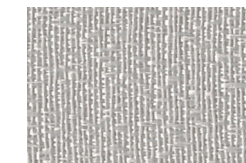


charcoal F1262

### dune



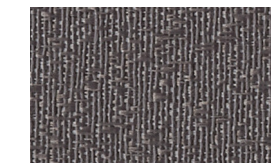
deep night F2312



haze F2252



erosion F2382



raven F2302

### abstract



tobey F2422

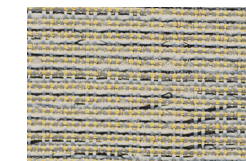


rothko F2432

### grade 3 tempest



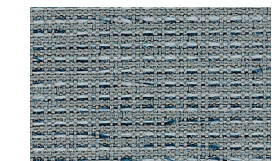
zebra F1113



tumbleweed F1173



frost F1143

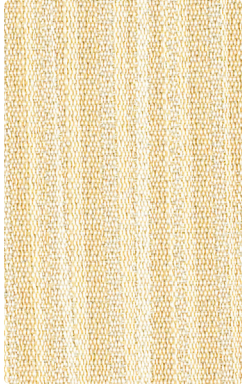


starlight F1153

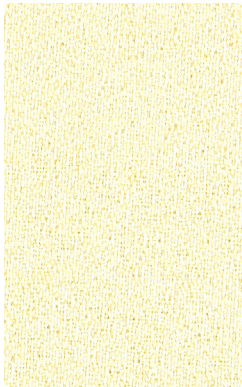


slate F1163

NOTE: Dye lots may vary slightly from samples shown.



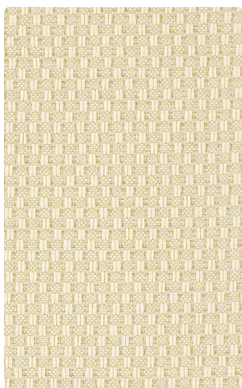
**curtain call**  
latte F6602



**backdrop**  
bone F6482



**glint**  
sisal F8012



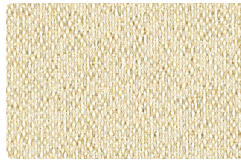
**kinect**  
ivory F7012



dove F6612



chrome F6622



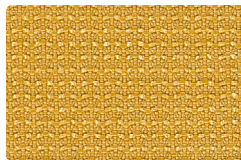
mica F6402



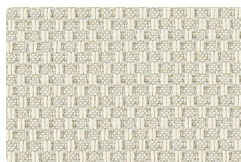
jute F6422



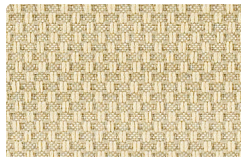
pearl F8022



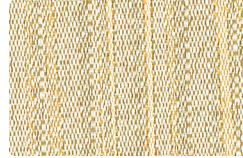
gobi F8052



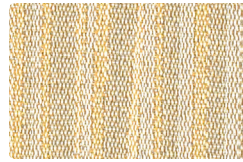
veil F7022



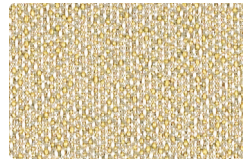
chiffon F7052



desert F6642



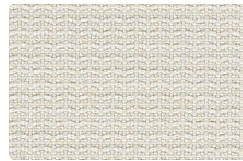
tawny F6652



cement F6442



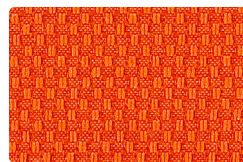
mocha F6432



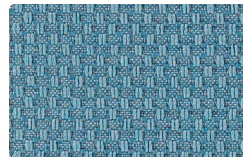
gypsum F8032



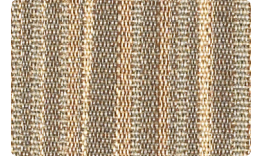
serene F8062



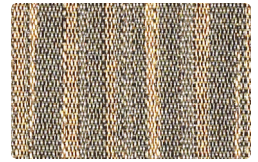
passion F7032



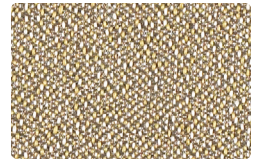
cove F7062



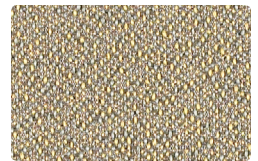
pebble F6632



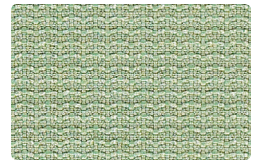
sea F6662



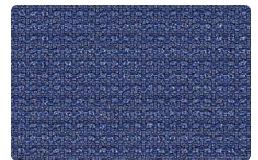
charcoal F6462



bonsai F6472



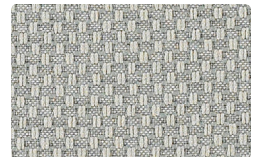
vera F8042



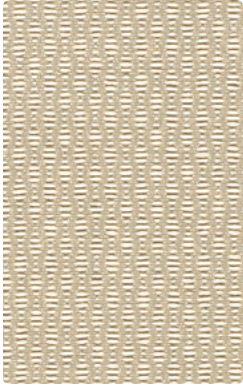
caspian F8072



dew F7042



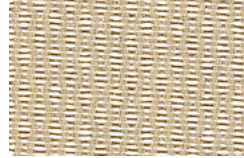
alloy F7072



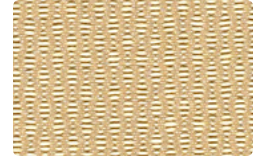
cameo  
metal F6512



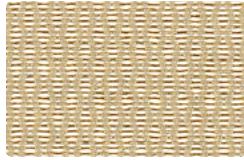
mist F6502



linen F6542



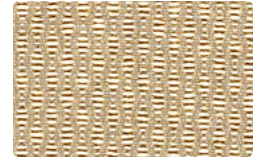
coffee F6522



smoke F6532



stone F6552



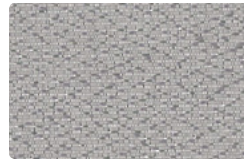
twig F6562



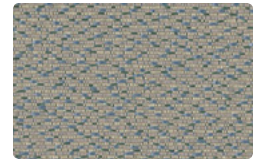
universe  
whitecap F6032



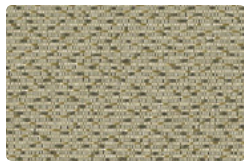
crème brulee F6012



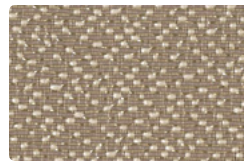
mica F6042



cosmic F6072



seneca F6052



milkyway F6062



depth F6082



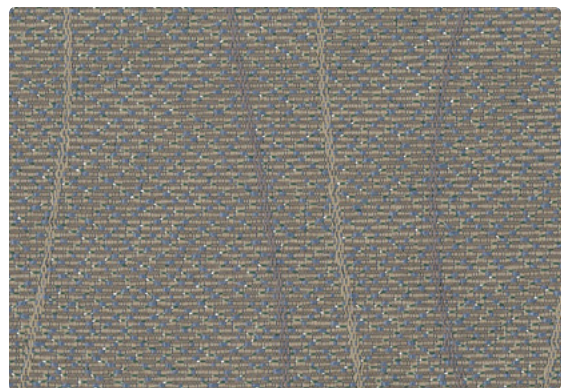
meander  
sandshell F6202



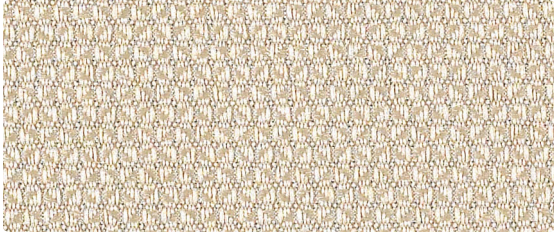
meander  
agate taupe F6222



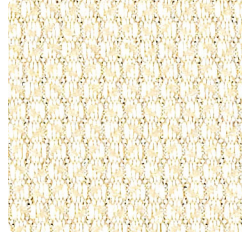
meander  
overcast F6212



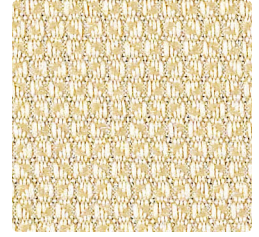
meander  
nightshadow F6232



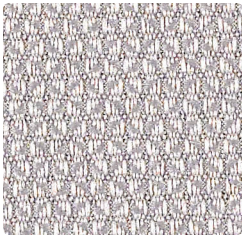
pact  
putty F6682



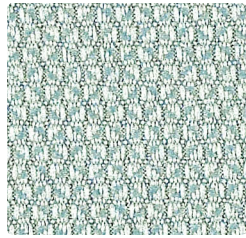
calla F6692



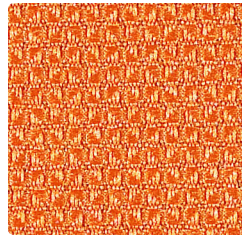
toasty F6702



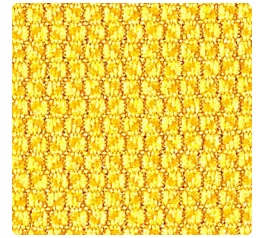
dove F6712



coastal F6722



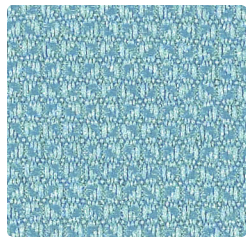
nectar F6732



eureka F6742



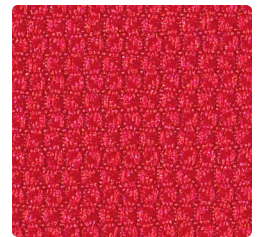
aloe F6752



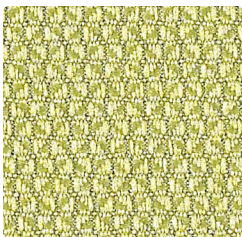
azure F6762



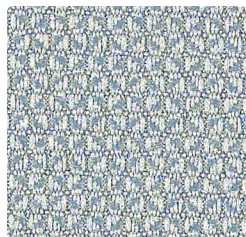
dragon F6772



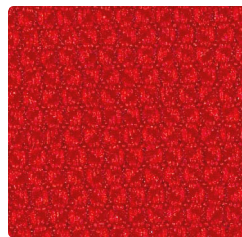
rubine F6782



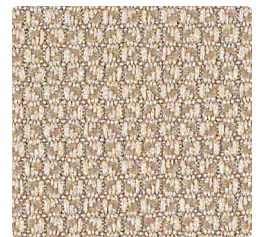
fern F6792



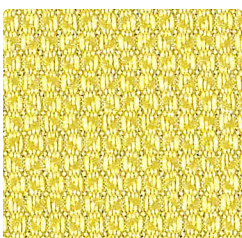
harbour F6802



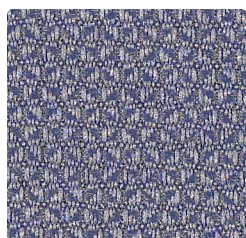
roma F6812



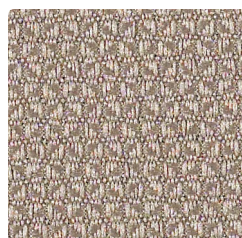
taupe F6822



lime F6832



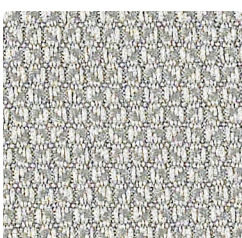
delft F6842



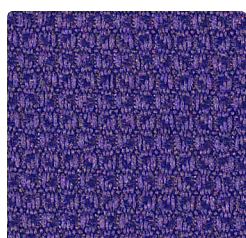
lily F6852



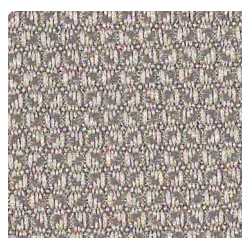
roast F6862



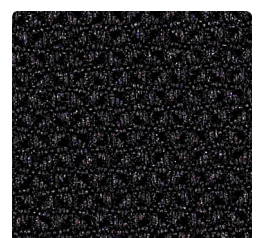
patina F6872



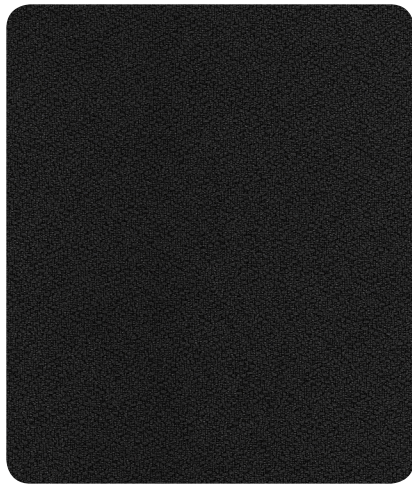
tanzanite F6882



sketch F6902



midnight F6892



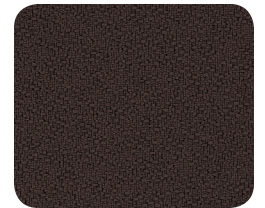
open house onyx 8300-9131



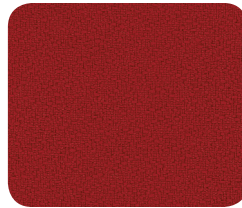
graphite 8300-9261



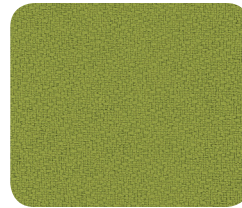
midnight 8300-9221



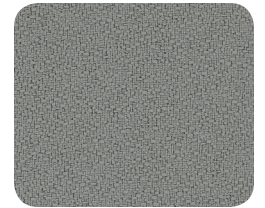
coffee bean 8300-9271



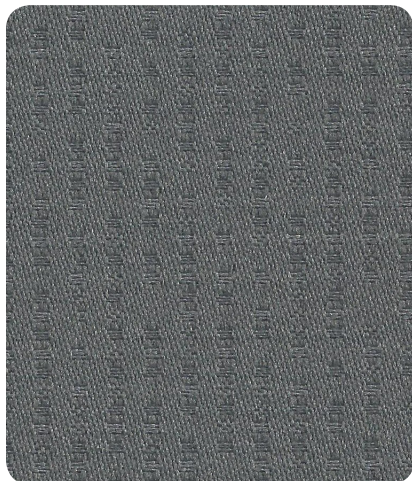
red delicious 8300-9161



green apple 8300-9231



asteroid 8300-9111



perseus pebble 8300-9991



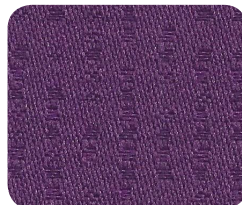
dune 8300-9941



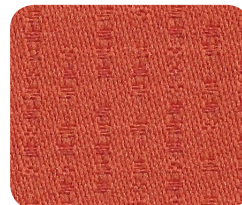
ivory 8300-9951



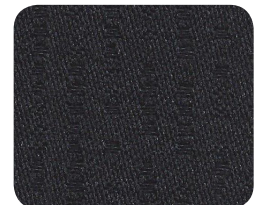
thyme 8300-9961



madras 8300-9971



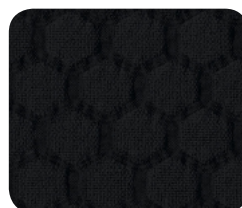
seville 8300-9981



obsidian 8300-9771



beehive pear 8310-9662



black 8310-9622



slate 8310-9632



gris 8310-9642



gala 8310-9652



mustard 8310-9672



azure 8310-9682