

tayco®



GSA:
General Services
Administration

GSA#:
GS27F0004Y





table of contents

company overview	5
environmental overview	7
cosmopolitan	8
metropolis executive	10
metropolis professional	12
metropolis conference	14
metropolis collaborate	16
one-touch table	18
contacts	20
policies	20



Head Office, 400 Norris Glen Road.
Toronto, Ontario M9C 1H5



Manufacturing Facility, Norris Glen building,
Toronto

office furniture in your comfort zone.

Tayco was established in 1976, with the acquisition of the rights to one of the first freestanding acoustical partitions in North America, when president Phil Philips embarked on a journey to realize his dream of leading a company.

As the dynamics of office life progressed over time, partitions morphed into systems and became Tayco's core strength. With support from freestanding casegoods, seating, boardroom furniture, and various accessory products, Tayco now boasts an impressive portfolio of solutions that responds to the requirements of today's workplace.

Beyond our function as a manufacturer of office furniture products, Tayco is a company with a conscience. Striving to minimize our environmental impact, raising funds for charities, and giving back to the community are all essential elements of Tayco's culture.





right for you. right for the world.

Concern for the environment has changed the way we live, work, and play. At Tayco, we find new ways to minimize our impact on the environment each day. Environmental consideration is evident in the development of our products, the materials we use, our industrial processes, and every aspect of our manufacturing, sales and delivery chain.

Driven by the increasing stewardship of our customers, implementing and adhering to environmental and sustainable standards are our responsibilities as a manufacturer and our obligation to the planet. Accordingly, Tayco has earned GREENGUARD Certification for indoor air quality and complies with the stringent requirements of the Leadership in Energy and Environmental Design (LEED) Green Building Rating System.



comfortable in any workplace. cosmopolitan.

Seasoned, smart and sophisticated.

Cosmopolitan is at home in any planning situation. Its flexibility and infinite design possibilities allow it to adapt to environments calling for an open plan, private spaces and everything in between. Cosmopolitan defines the criteria for all-encompassing office furniture systems.





Wide-minded.

Been there, done that. There is no application that Cosmopolitan can't resolve. When needs change, Cosmopolitan changes with them, easily accommodating complex reconfigurations or simple aesthetic facelifts.

Well-dressed.

A refined palette of fabrics and finishes combines aesthetic appeal and sustainable materials, enabling Cosmopolitan to dress for any occasion.

World-wise.

Cosmopolitan is conscious of its impact on the environment. Each component, process and material that makes up the system is carefully considered with the ultimate intention of reducing its environmental footprint.



Create a cooperative team environment with the perfect blend of possibilities. Cosmopolitan provides an attractive and flexible environment with exceptional aesthetics, inviting shapes, superb organizational capabilities and a minimal footprint.

sophistication personified. metropolis executive.

Practiced, polished and prominent.

Metropolis Executive provides new meaning to the corner office with a view with contemporary executive suites that will create a lasting impression.





All in the details.

Metropolis Executive features 1 1/2-inch thick worksurfaces with a choice of two decorative trim styles: Straight or Gothic.

You've earned it.

Clean lines and a sophisticated aesthetic add distinguished appeal to any office space.

Pull up a chair.

A recessed full modesty offers plenty of room for visitors.

Choice.

Choose from 17 laminate colors and 2 decorative trim options

Taking shape.

Metropolis offers an extensive array of worksurface/desk shapes and sizes adapting to any floor plan, even when a small footprint is required.

Handle this.

Metropolis is available with a choice of 6 handle styles in a brushed nickel finish.



style and functionality. metropolis professional.

Collective, customized and cooperative.
Metropolis Professional features space-saving, flexible team environments that provide a welcoming atmosphere, while suiting the needs of managers, team leaders and every team member - making the most of every square inch of office space.



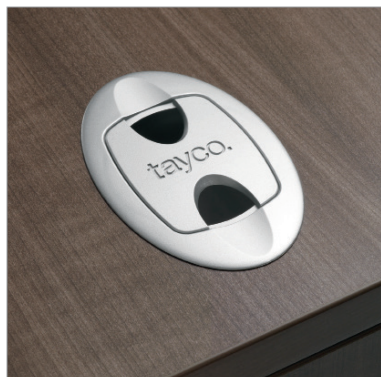


Size it up.

Metropolis Professional features 1-inch thick worksurfaces in various shapes and sizes to outfit the entire office.

Functional.

A hinged-door hutch, underdesk pedestal and combo cabinet complete with shelving, lateral files and interior door tack boards all contribute to this fully-functional workspace.



Organize.

A pedestal file drawer with removable pencil tray keeps all office essentials neat and organized.

Extend.

Every Metropolis box or file drawer features full-extension drawers, allowing for easy access to documents and stored items.

Storage maximized.

Metropolis provides a storage solution for all situations, whether it's for personal storage in a workstation or bookshelves in a library.



a collective state of mind. metropolis conference.

Work together, come together, and get together.
Metropolis Conference is an invitation to meet in elegance
and encourage collaboration, whether it is formal or casual.
Metropolis Conference customizes to accommodate your
needs with a comfortable working space for an impromptu
brainstorming session or an executive board meeting.





Mix-and-Match.

All tabletops and bases are interchangeable to accommodate various room sizes, designs and purposes. Straight, Racetrack and Boat-shaped tables range from 6' to 12' long. Table bases are available in drum, H-Base, ellipse and metal post shapes. Tabletops are 1 1/2-inch thick with a choice of Straight or Gothic decorative trim.

Cabinets and Storage.

Wall-to-wall cabinetry features hutches and credenzas, coat storage, adjustable shelving, audio-visual storage and more. At 78-inch high, cabinetry is exclusive to Metropolis Conference and is available with classic plain-front or frosted acrylic doors and a choice of six handle styles.

Audio-visual.

A built-in audio-visual cabinet provides function and convenience during presentation meetings.

A perfect presentation.

Available mobile lectern and whiteboard provide a visual focal point during presentations.



where common space yeilds uncommon results. metropolis collaborate.

Flexible, favorable, and forward thinking.

Metropolis Collaborate combines the sophistication of the Metropolis Collection with the organizational and planning capabilities of an office system. Offering 1-inch and 1 1/2-inch worksurfaces in an array of laminate colors, it's easy to complement the aesthetics of any interior.



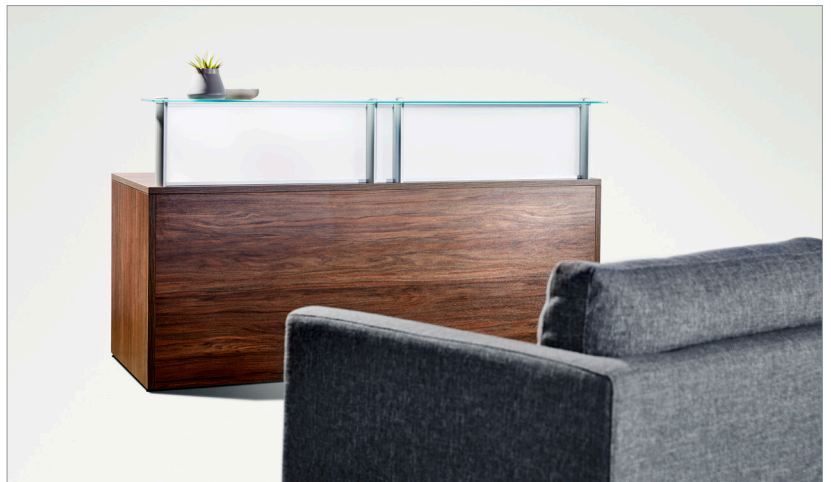


Space and privacy.

Similar to a systems product line, Metropolis Collaborate divides above worksurface space with tackable fabric, laminate, acrylic, and accessory bar partitions, which range in height from 8-inches to 32-inches. Desired privacy levels and access to natural light is achieved gracefully.

Get together.

Metropolis Collaborate fosters open communication between co-workers. Low partitions and transaction tops promote the sharing of ideas, while extension worksurfaces provide a location for impromptu meetings.



Organization above.

Overhead storage cabinets are available with laminate or glazed doors and provide lockable personal storage within the workstation.

Organization below.

Pedestals, laterals, and combination cabinets secure files, work tools and personal items. Units can be keyed alike or randomly. Communicating amongst teams or creating a to-do list is facilitated with a whiteboard partition.

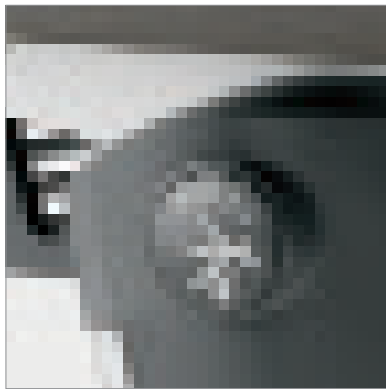


just a push of a button away. one-touch table.

A mobile, multi-functional training table that accommodates specific needs in a diversified range of scenarios within corporate and institutional environments.

The One-Touch Table is ideal for dynamic environments requiring frequent and easy reconfiguration and storage. Tables can be gathered together using the quick linking mechanism to create a variety of applications.





Touch and go.

Table set-up is easy. Worksurfaces tilt and lock into an upright position with a simple touch of a button.

Save space.

Tables can be conveniently stored when not in use by nesting them together, saving valuable real estate.

Come Together. Collectively.

Tables can gather together for an impromptu brainstorming session or teaming exercise.



Gather your thoughts.

Individual stations offer the functionality and support required to deliver productive results.

Meeting now in session.

The One-Touch Table provides a streamlined design suited for formal or informal meetings.

who to call. contacts.

US Office & Showroom 14 Penn Plaza, Suite 1902 New York, New York 10122 312.464.9999 1.800.675.4092 www.tayco.com	Joanna Sawaqed-Diaz Regional Sales Manager t. 1.800.675.4092 x3339 f. 1.888.291.0127 joanna@tayco.com	Naoko Staios Client Services Manager t. 1.800.675.4092 x3331 f. 1.888.291.0127 naoko@tayco.com
---	--	---

*All purchase orders can be emailed to purchaseorders@tayco.com

what's the deal. discount details.

Discount Statement: Base discounts are off LIST

Category	Product Lines	Project List Price	Discount
Systems 711-1	Cosmopolitan	\$0 - \$450,000	68.5%
Casegoods 711-2	Metropolis, Metropolis Collaborate	\$0 - \$450,000	68.5%
Tables 711-11	One-Touch	\$0 - \$450,000	68.5%

what to know. all the details.

Contract No:	GS-27F-000-4Y
Contract Period:	November 1, 2016 – October 31, 2021
Awarded SIN's:	711-1, 711-2, 711-11
Maximum Order:	\$500,000 net per SIN
Minimum Order:	\$100 list per SIN
Geographic Coverage:	48 contiguous United States and Washington D.C.
Payment Terms:	Net 30 days
Prompt Payment Terms:	1% - 20 days (Excluding credit cards).
Government Credit Card:	VISA and Mastercard accepted with no additional discounts. Please download credit card payment form at http://www.tayco.com/Government/UnitedStates.aspx
Delivery Terms:	4 to 6 weeks
Overnight Delivery:	Not available
Urgent requirements:	Must be submitted in writing
FOB Destination:	Within the Continental United States. For Alaska, Hawaii, and Puerto Rico, FOB will be inland point of exportation.
Order/Payment Address:	Tayco Business Interiors 14 Penn Plaza, Suite 1902 New York, New York 10122
Phone:	1.800.675.4092
Fax:	1.888.291.0127
Installation Charge:	To be negotiated between dealer of record and GSA agency. Will be added to order as line item.
Warranty:	Manufacturer's Limited Lifetime Warranty
Cancellation:	Prior to production, no cancellation charge will apply. Once production commences costs will be incurred.
Restocking:	It is not Tayco's policy to accept returned product. In extenuating circumstances, the return of product may be approved by Tayco. The Purchaser must request a Return Authorization Form from Tayco. All such returns must be shipped freight prepaid including duty and brokerage fees unless otherwise indicated by Tayco. Standard items are subject to a minimum restocking charge of 25% of the net value of the returned items. COD (cash on delivery) returns will not be accepted.

tayco®

www.tayco.com

2016